

## Butler County General Health District's 126<sup>th</sup> COVID-19 Update (07/23/2022)

### Confirmed and Probable COVID-19 Cases Reported to Butler County\*

#### Butler County Residents, 2020-22

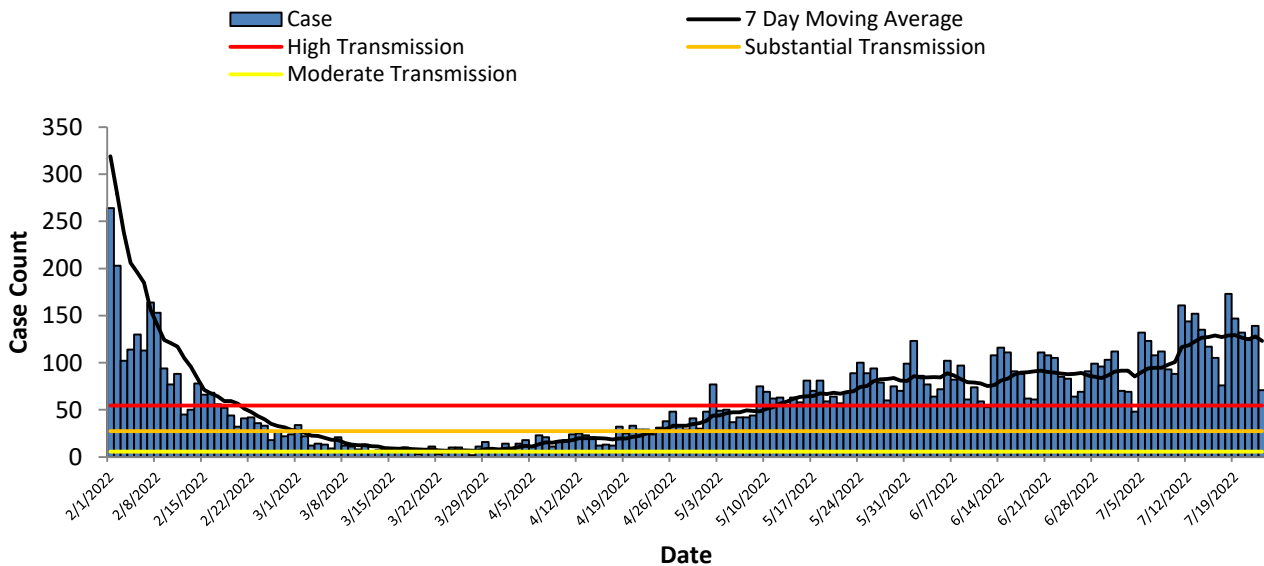
<b>Total # of Cases (07/23):</b>	<b>101,874*</b>
<b>ODH verified Deaths (07/23):</b>	<b>1,167**</b>
<b>Hospitalizations (07/23):</b>	<b>3,398</b>
<b>First Case Reported:</b>	<b>3/11/2020</b>
<b>Last Case Reported (so far):</b>	<b>07/23/2022</b>
<b>Confirmed Cases:</b>	<b>75,781</b>
<b>Probable Cases:</b>	<b>26,093</b>
<b>Age Range:</b>	<b>&lt;1-103</b>
<b>Median Age:</b>	<b>37</b>
<b>Mean Age:</b>	<b>38.3</b>
<b>Incidence (thru 07/23):</b>	<b>26,589.7 per 100,000</b>
<b>Prevalence (thru 07/23):</b>	<b>26.6% of BC population</b>
<b>7-Day Positivity Rate (07/28):</b>	<b>24.11<sup>#</sup>% of tests performed in BC</b>

Table 1: CDC Indicators		
Indicator	Butler County New Cases over 7 days	Status Level According to CDC
<b>Community Level</b>	-	<b>HIGH</b>
Positivity Rate	24.11% of tests performed in Butler County	High Positivity (over 9.99% of tests)
Incidence per 100,000 population	220.8 per 100,000	High Spread (over 99.99 per 100,000)

The Butler County General Health District will continue to monitor transmission levels based on previous CDC indicators; however, generalized guidance will now be based on the CDC's Community Level indicators.

Butler County's community COVID-19 levels are now **High**. This means that the Butler County General Health District in accordance with the CDC guidelines now recommends wearing a mask while in-doors regardless of vaccination status. It is also recommended that everyone stay up-to-date with their COVID-19 immunizations, and that those who are at high risk for severe complications or have loved ones at high risk for severe complications due to COVID-19 infection be cautious in regards to social settings.

**Figure 1. Cases by Date of Event Since February 1, 2022**



All figures show reported cases of COVID-19 in Butler County as of 0800 EDT 07/28/2022. Due to delays in reporting, the numbers of confirmed and probable cases on all figures are subject to change between reports and confirmed and probable case counts are likely to increase. \*This should not be assumed to be the total disease burden of COVID-19 in Butler County only those that have been laboratory confirmed OR meet ODH probable case criteria AND reported to Public Health.

\*\*Deaths are now reconciled to the Ohio Department of Health's available data to avoid discrepancies between the state and local numbers. ODH's protocol has changed to avoid reconciliation errors and now only includes those deaths that have been reconciled with Vital statistics and may not match what has been reported to the CDC which are provisional numbers. This is a lagging indicator and will be multiple weeks behind.

#Gathered from CDC's Data Tracker of Butler County 07/28/2022 0800 EDT accessible at <https://covid.cdc.gov/covid-data-tracker/#county-view>

Figure 2. Reported Cases of COVID-19 by Date of Event 2020-2022\*

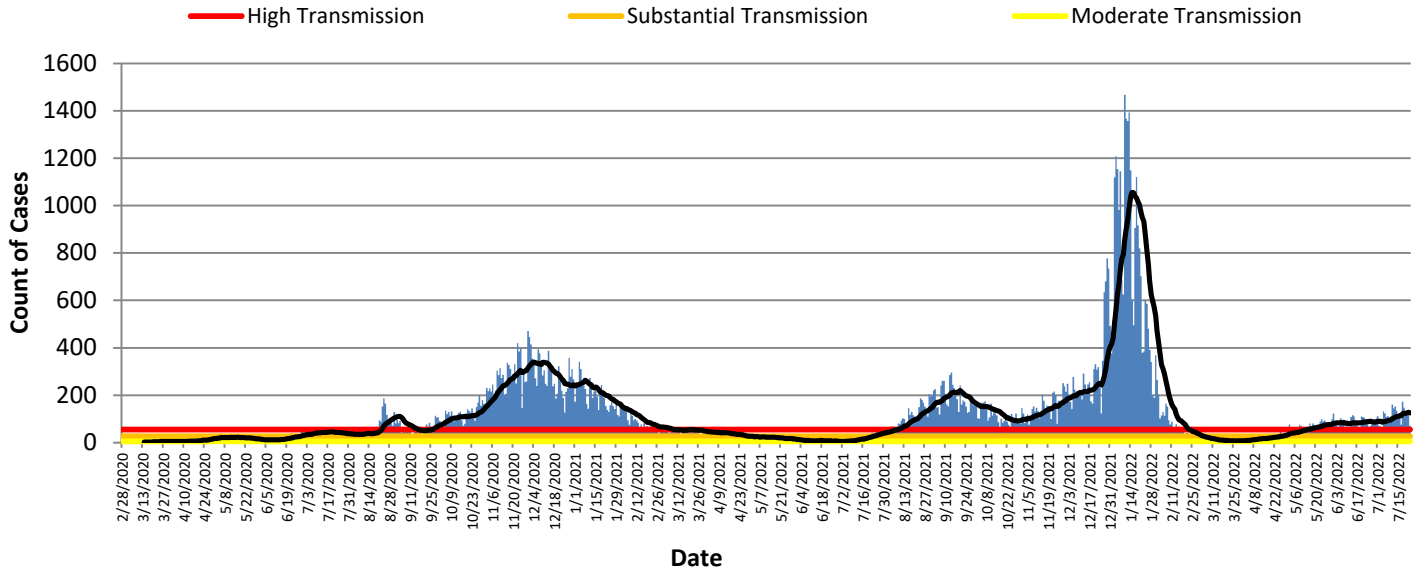


Table 2: Total Reported\* Cases by ZIP Code

ZIP Code	Number of Cases	New Cases (07/10-07/23)	Change in cases from previous 7 days (07/03-07/09)	Transmission	% of Cases
45011	18820	161	-3.0%	High	18.5%
45044	14525	150	1.4%	High	14.3%
45013	13554	100	-23.1%	High	13.3%
45069	13926	122	-22.8%	High	13.7%
45014	12026	98	2.1%	High	11.8%
45056	6498	39	62.5%	High	6.4%
45042	6749	61	10.9%	High	6.6%
45067	4125	33	22.2%	High	4.0%
45050	2904	25	13.6%	High	2.9%
45015	2902	32	-15.8%	High	2.8%
45241	1571	17	88.9%		1.5%
45053	718	3	0.0%	Substantial	0.7%
45005	655	5	-61.5%		0.6%
45064	401	3	-		0.4%
45246	191	1	0.0%		0.2%
45062	151	0	-		0.1%
Cases lacking zip code information or from zip codes with too few cases	2,158	12	-		2.1%
<b>Butler County (inclusive)</b>	<b>101,874</b>	<b>862</b>	<b>-40 (-4.43%)</b>	<b>High</b>	<b>100%</b>

Zip-codes that have transmissions not rated have most of their populations outside of Butler County. Zip-codes with too few cases have been removed for privacy concerns.

**New Cases are determined by “Date of Event” which is when the case was ill/test was collected. CDC determines new cases by “Date of Report”.**

All figures show reported cases of COVID-19 in Butler County as of 0800 EDT 07/28/2022. Due to delays in reporting, the numbers of confirmed and probable cases on all figures are subject to change between reports and confirmed and probable case counts are likely to increase. \*This should not be assumed to be the total disease burden of COVID-19 in Butler County only those that have been laboratory confirmed OR meet ODH probable case criteria AND reported to Public Health.

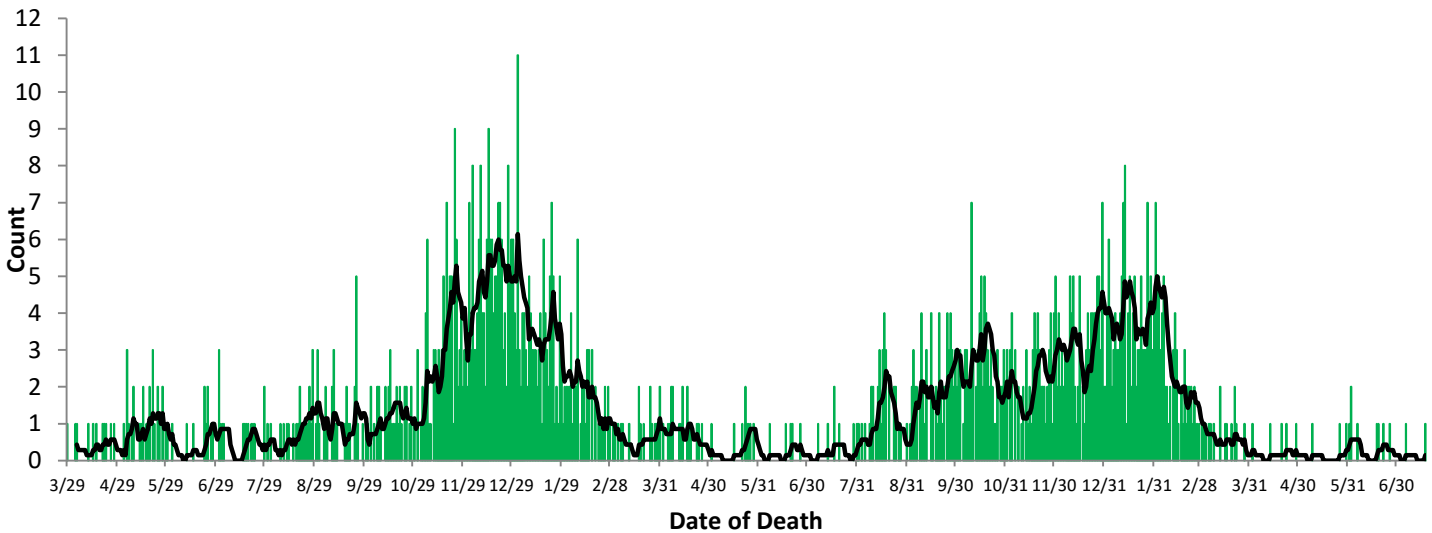
\*Data is provisional – only confirmed or probable COVID-19 cases are included in counts. Report reflects time period since the introduction of SARS-CoV-2 into humans, measured in days. Data accessed from the Ohio Disease Reporting System (ODRS) on 07/28/2022 at 0800 EDT.

\*\*Deaths are now reconciled to the Ohio Department of Health’s available data to avoid discrepancies between the state and local numbers. ODH’s protocol has changed to avoid reconciliation errors and now only includes those deaths that have been reconciled with Vital statistics and may not match what has been reported to the CDC which are provisional numbers. This is a lagging indicator and will be multiple weeks behind.

#Gathered from CDC’s Data Tracker of Butler County 07/28/2022 0800 EDT accessible at <https://covid.cdc.gov/covid-data-tracker/#county-view>

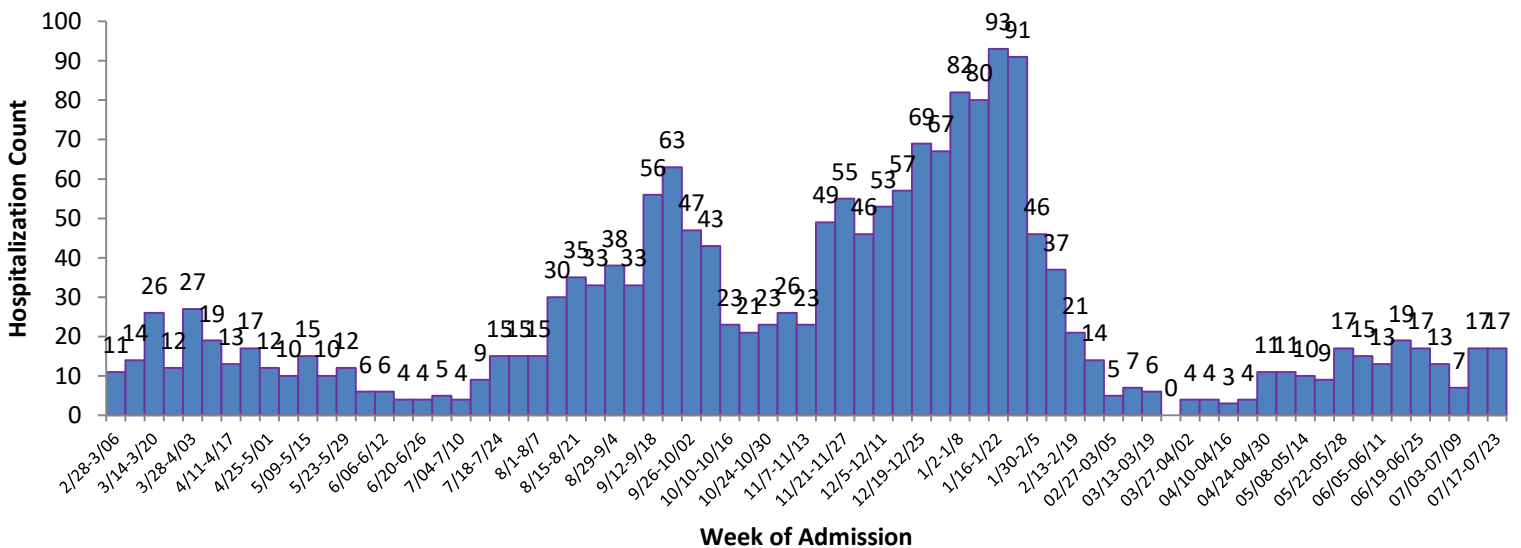
Table 2 shows the zip-code level data that is new for this week. Almost all zip codes are in high transmission.

**Figure 3. Confirmed COVID-19 Deaths by date of death, 2020-22\*\***



Figures 3 and 4 show severe case outcomes. These are both lagging indicators since it typically takes time for a case to succumb to COVID and well over a month for a COVID-19 death to be verified. Deaths will take about 4-6 weeks to begin to register for last week.

**Figure 4. COVID-19 Hospitalizations of Butler County Residents by Week since the first week of March 2021**



All figures show reported cases of COVID-19 in Butler County as of 0800 EDT 07/28/2022. Due to delays in reporting, the numbers of confirmed and probable cases on all figures are subject to change between reports and confirmed and probable case counts are likely to increase. \*This should not be assumed to be the total disease burden of COVID-19 in Butler County only those that have been laboratory confirmed OR meet ODH probable case criteria AND reported to Public Health.

\*\*Data is provisional – only confirmed or probable COVID-19 cases are included in counts. Report reflects time period since the introduction of SARS-CoV-2 into humans, measured in days. Data accessed from the Ohio Disease Reporting System (ODRS) on 07/28/2022 at 0800 EDT.

\*\*Deaths are now reconciled to the Ohio Department of Health's available data to avoid discrepancies between the state and local numbers. ODH's protocol has changed to avoid reconciliation errors and now only includes those deaths that have been reconciled with Vital statistics and may not match what has been reported to the CDC which are provisional numbers. This is a lagging indicator and will be multiple weeks behind.

#Gathered from CDC's Data Tracker of Butler County 07/28/2022 0800 EDT accessible at <https://covid.cdc.gov/covid-data-tracker/#county-view>

## High

- Wear a well-fitting mask<sup>1</sup> indoors in public, regardless of vaccination status (including in K-12 schools and other indoor community settings)
- If you are immunocompromised or [high risk](#) for severe disease
  - Wear a [mask or respirator](#) that provides you with greater protection
  - Consider avoiding non-essential indoor activities in public where you could be exposed
  - Talk to your healthcare provider about whether you need to take other precautions (e.g., testing)
  - Have a plan for rapid testing if needed (e.g., having home tests or access to testing)
  - Talk to your healthcare provider about whether you are a candidate for treatments like oral antivirals, PrEP, and monoclonal antibodies
- If you have household or social contact with someone at [high risk](#) for severe disease
  - consider self-testing to detect infection before contact
  - consider wearing a mask when indoors with them
- Stay up to date with COVID-19 vaccines and boosters
- Maintain improved ventilation throughout indoor spaces when possible
- Follow CDC recommendations for isolation and quarantine, including getting tested if you are exposed to COVID-19 or have symptoms of COVID-19
- Consider setting-specific recommendations for prevention strategies based on local factors
- Implement healthcare surge support as needed
- Protect people at [high risk](#) for severe illness or death by ensuring equitable access to vaccination, testing, treatment, support services, and information
- Consider implementing screening testing or other testing strategies for people who are exposed to COVID-19 in workplaces, schools, or other community settings as appropriate
- Implement enhanced prevention measures in high-risk congregate settings (see guidance for [correctional facilities](#) and [homeless shelters](#))
- Distribute and administer vaccines to achieve high community vaccination coverage and ensure health equity
- Maintain improved ventilation in public indoor spaces
- Ensure access to testing, including through point-of-care and at-home tests for all people
  - Communicate with organizations and places that serve people who are immunocompromised or at [high risk](#) for severe disease to ensure they know how to get rapid testing
- Ensure access and equity in vaccination, testing, treatment, community outreach, support services for disproportionately affected populations

<sup>1</sup> At all levels, people can wear a mask based on personal preference, informed by personal level of risk. People with symptoms, a positive test, or exposure to someone with COVID-19 should wear a mask.

Source: [https://www.cdc.gov/coronavirus/2019-ncov/science/community-levels.html#anchor\\_47145](https://www.cdc.gov/coronavirus/2019-ncov/science/community-levels.html#anchor_47145)

All figures show reported cases of COVID-19 in Butler County as of 0800 EDT 07/28/2022. Due to delays in reporting, the numbers of confirmed and probable cases on all figures are subject to change between reports and confirmed and probable case counts are likely to increase. \*This should not be assumed to be the total disease burden of COVID-19 in Butler County only those that have been laboratory confirmed OR meet ODH probable case criteria AND reported to Public Health.

\*Data is provisional – only confirmed or probable COVID-19 cases are included in counts. Report reflects time period since the introduction of SARS-CoV-2 into humans, measured in days. Data accessed from the Ohio Disease Reporting System (ODRS) on 07/28/2022 at 0800 EDT.

\*\*Deaths are now reconciled to the Ohio Department of Health's available data to avoid discrepancies between the state and local numbers. ODH's protocol has changed to avoid reconciliation errors and now only includes those deaths that have been reconciled with Vital statistics and may not match what has been reported to the CDC which are provisional numbers. This is a lagging indicator and will be multiple weeks behind.

#Gathered from CDC's Data Tracker of Butler County 07/28/2022 0800 EDT accessible at <https://covid.cdc.gov/covid-data-tracker/#county-view>