



Butler County General Health District's 69th COVID-19 Update (5/22/2021)

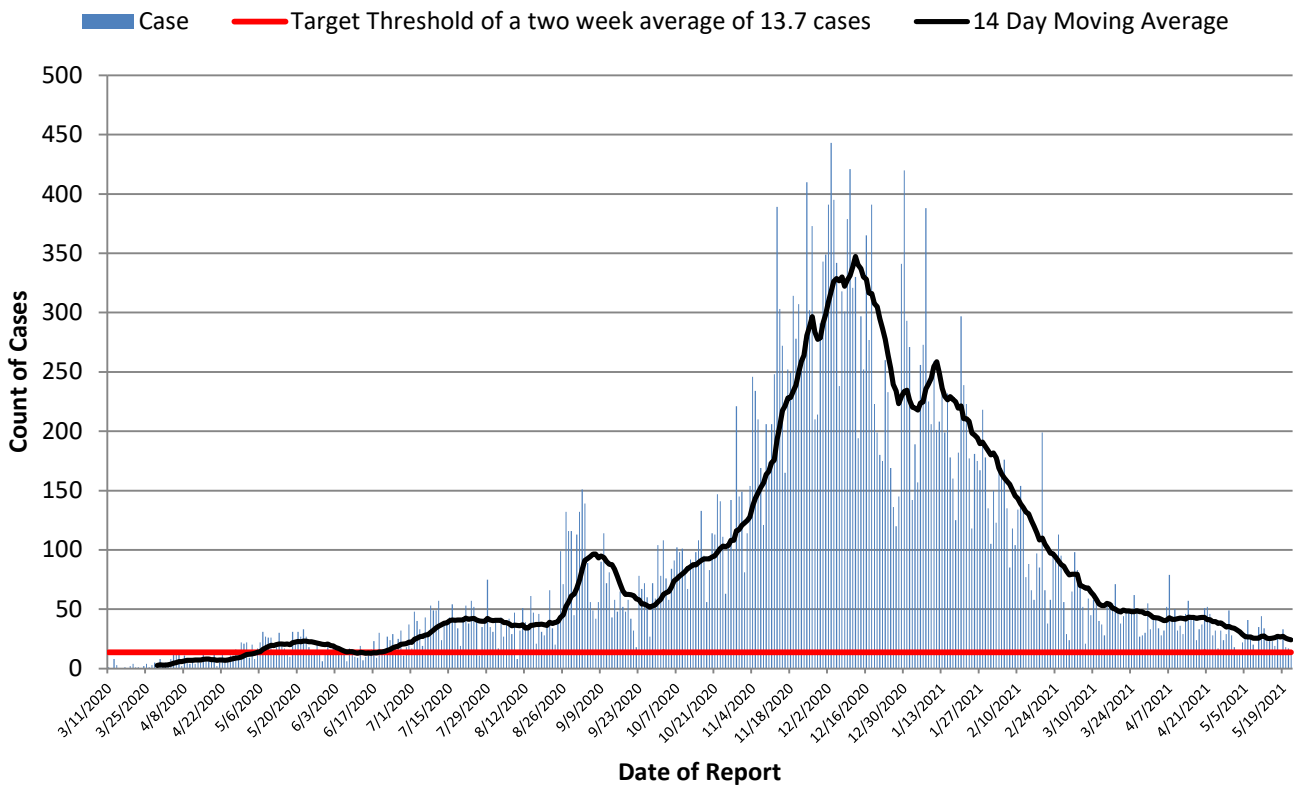
Confirmed and Probable COVID-19 Cases Reported to Butler County* Butler County Residents, 2020-21

Total # of Cases (05/22):	38,364*
ODH verified Deaths (05/22):	590**
Hospitalizations (05/22):	1,580
ICU admissions (05/22):	136
First Case Reported:	3/11/2020
Last Case Reported (so far):	5/22/2021
Confirmed Cases:	34,344
Probable Cases:	4,020
Age Range:	<1-103
Median Age:	40
Mean Age:	41.0
Incidence (thru 05/22):	10,013.2 per 100,000
Prevalence (thru 05/22):	10.0% of BC population
14-Day Positivity Rate (5/15):	3.2% of tests performed in BC

In the following tables and figures, all threshold values are equivalent.

Table 1: Indicators for Reopening for Butler County		
Indicator	Last 2 Weeks	Governor DeWine's Target
Incidence per 100,000 population	88.7 per 100,000	50 per 100,000
Cumulative Case Count	340 through 14 days	191.6 through 14 days
Daily Average of new cases	24.3 per day through 14 days	13.7 per day through 14 days

Figure 1. Reported Cases of COVID-19 by Date of Report*



All figures show reported cases of COVID-19 in Butler County as of 1700 EDT 05/22/2021. Due to delays in reporting, the numbers of confirmed and probable cases on all figures are subject to change between reports and confirmed and probable case counts are likely to increase. **This should not be assumed to be the total disease burden of COVID-19 in Butler County only those that have been laboratory confirmed OR meet ODH probable case criteria AND reported to Public Health.

*Data is provisional – only confirmed or probable COVID-19 cases are included in counts. Report reflects time period since the introduction of SARS-CoV-2 into humans, measured in days. Data accessed from the Ohio Disease Reporting System (ODRS) on 05/22/2021 at 1700 EST.

**Deaths are now reconciled to the Ohio Department of Health's available data to avoid discrepancies between the state and local numbers. ODH's protocol has changed to avoid reconciliation errors and now only includes those deaths that have been reconciled with Vital statistics and may not match what has been reported to the CDC which are provisional numbers. This is a lagging indicator and will be multiple weeks behind.

#Data collected from Ohio Impact-SIIS 05/22/2021 ## Map and Table created by the Ohio Department of Health

Figure 2. Cumulative Count of Cases of COVID-19 Reported by day previous two weeks

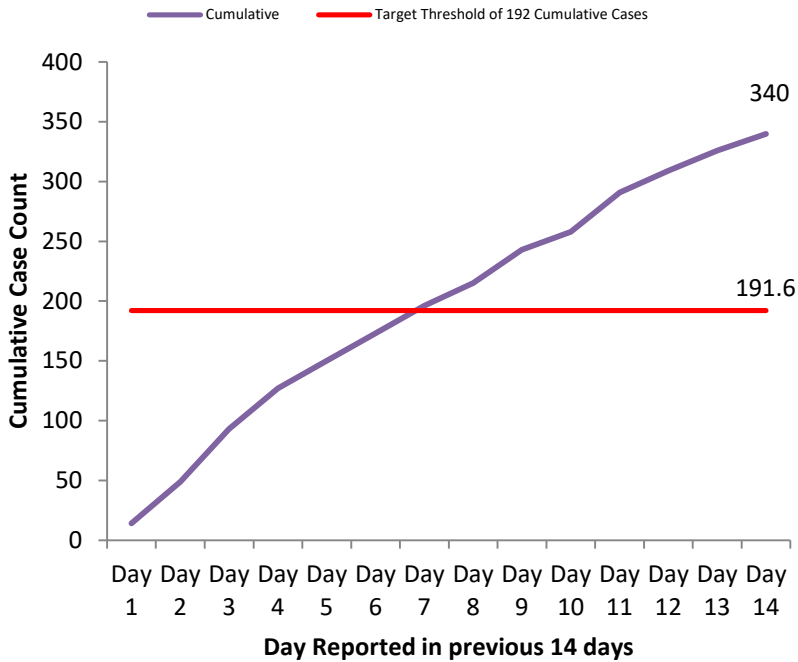


Figure 3. Cases per 100,000 population Reported in 2021

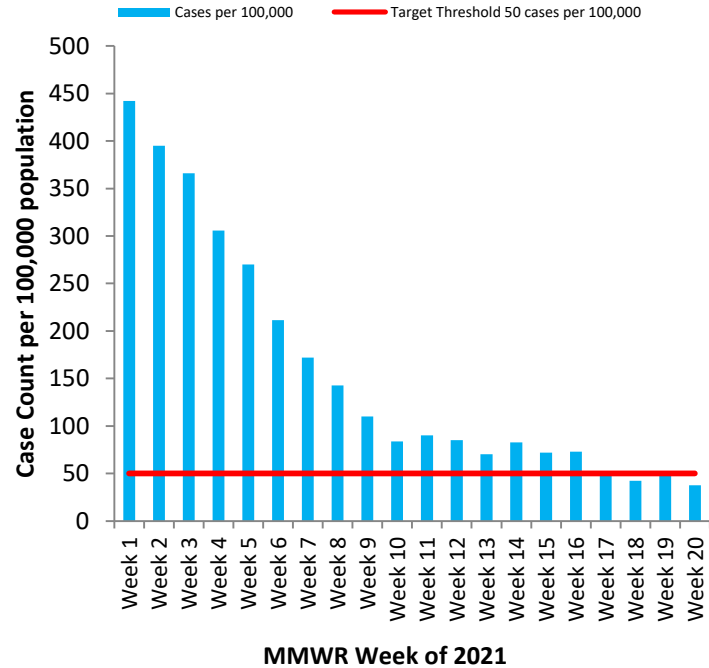


Table 2: Total Reported* Cases by ZIP Code

ZIP Code	Number of Cases	Change from previous week	Incidence per 100,000 thru 05/22	% of Confirmed Cases
45011	6753	↑30 (0.5%) From 6722	9691.9	17.6%
45013	5154	↑12 (0.2%) from 5142	9796.1	13.4%
45044	5118	↑ 25 (0.5%) from 5094	9689.1	13.3%
45069	5020	↑ 21 (0.4%) from 4999	10232.4	13.1%
45014	4891	↑24 (0.5%) from 4867	11136.9	12.7%
45056	3199	↓3 (0.1%) from 3202	11831.5	8.3%
45042	2524	↑ 13 (0.5%) from 2511	9542.2	6.6%
45067	1525	↑3 (0.3%) from 1521	10972.8	4.0%
45050	1184	↑4 (0.3%) from 1180	13851.2	3.1%
45015	1010	↑3 (0.3%) from 1007	8390.1	2.6%
45241	576	↓5 (0.9%) from 581		1.5%
45053	321	↑1 (0.3%) from 320	9386.0	0.8%
45064	145	↑1 (0.7%) from 144		0.4%
45246	58	↑1 (1.8%) from 57		0.2%
45062	56	0 (0%) from 56		0.1%
Cases lacking zip code information or from zip codes with too few cases	830	-	-	2.2%
Butler County (inclusive)	38,364	↑127 (0.3%) from 38237	10,013.2	100%

Zip-codes not calculated have most of their population outside of Butler County. Rate given for comparison by population and will be higher than the actual amount. Zip-codes with too few cases have been removed for privacy concerns.

Red indicates zip codes where the percentage increase is greater than the increase from the previous week.

All figures show reported cases of COVID-19 in Butler County as of 1700 EDT 05/22/2021. Due to delays in reporting, the numbers of confirmed and probable cases on all figures are subject to change between reports and confirmed and probable case counts are likely to increase. *This should not be assumed to be the total disease burden of COVID-19 in Butler County only those that have been laboratory confirmed OR meet ODH probable case criteria AND reported to Public Health.

*Data is provisional – only confirmed or probable COVID-19 cases are included in counts. Report reflects time period since the introduction of SARS-CoV-2 into humans, measured in days. Data accessed from the Ohio Disease Reporting System (ODRS) on 05/22/2021 at 1700 EST.

**Deaths are now reconciled to the Ohio Department of Health's available data to avoid discrepancies between the state and local numbers. ODH's protocol has changed to avoid reconciliation errors and now only includes those deaths that have been reconciled with Vital statistics and may not match what has been reported to the CDC which are provisional numbers. This is a lagging indicator and will be multiple weeks behind.

#Data collected from Ohio Impact-SIIS 05/22/2021 ## Map and Table created by the Ohio Department of Health

Table 3. New Reports by MMWR Week, 2020

MMWR Week	End of Week	New Cases Reported	New Hospitalizations	New Confirmed Deaths**
11	3/14	6	1	0
12	3/21	10	3	0
13	3/28	11	6	0
14	4/4	44	18	3
15	4/11	50	16	1
16	4/18	43	10	2
17	4/25	55	19	5
18	5/2	99	16	1
19	5/9	131	18	7
20	5/16	134	17	4
21	5/23	184	26	7
22	5/30	111	12	7
23	6/6	113	16	1
24	6/13	89	10	1
25	6/20	115	13	1
26	6/27	167	19	7
27	7/4	198	10	6
28	7/11	286	18	0
29	7/18	260	26	3
30	7/25	269	12	4
31	8/1	274	9	3
32	8/8	242	17	2
33	8/15	264	14	3
34	8/22	264	14	7
35	8/29	545	24	9
36	9/5	770	14	8
37	9/12	496	18	8
38	9/19	368	17	4
39	9/26	378	14	10
40	10/3	504	10	5
41	10/10	590	16	6
42	10/17	682	28	10
43	10/24	769	25	8
44	10/31	909	45	6
45	11/7	1149	53	18
46	11/14	1538	51	13
47	11/21	1797	66	29
48	11/28	2059	68	30
49	12/05	2305	59	28
50	12/12	2689	69	30
51	12/19	2030	72	36
52	12/26	1428	52	37
53	1/2	1697	59	43
1	1/9	1630	45	25
2	1/16	1586	47	23
3	1/23	1432	34	29
4	1/30	1179	37	20
5	2/6	1060	59	14
6	2/13	830	40	14
7	2/20	680	25	11
8	2/27	557	16	8
9	3/06	428	13	4
10	3/13	322	10	3
11	3/20	345	24	3
12	3/27	326	13	4
13	4/3	270	20	6
14	4/10	316	25	5
15	4/17	287	14	3
16	4/24	270	15	4
17	5/1	213	7	0
18	5/8	163	11	1
19	5/15	198	18	0
20	5/22	150	7	0

All figures show reported cases of COVID-19 in Butler County as of 1700 EDT 05/22/2021. Due to delays in reporting, the numbers of confirmed and probable cases on all figures are subject to change between reports and confirmed and probable case counts are likely to increase. **This should not be assumed to be the total disease burden of COVID-19 in Butler County only those that have been laboratory confirmed OR meet ODH probable case criteria AND reported to Public Health.

*Data is provisional – only confirmed or probable COVID-19 cases are included in counts. Report reflects time period since the introduction of SARS-CoV-2 into humans, measured in days. Data accessed from the Ohio Disease Reporting System (ODRS) on 05/22/2021 at 1700 EST.

**Deaths are now reconciled to the Ohio Department of Health's available data to avoid discrepancies between the state and local numbers. ODH's protocol has changed to avoid reconciliation errors and now only includes those deaths that have been reconciled with Vital statistics and may not match what has been reported to the CDC which are provisional numbers. This is a lagging indicator and will be multiple weeks behind.

#Data collected from Ohio Impact-SIIS 05/22/2021 ## Map and Table created by the Ohio Department of Health

Figure 4. New Hospitalizations of Butler County Residents by Admission Date, 2020-21*

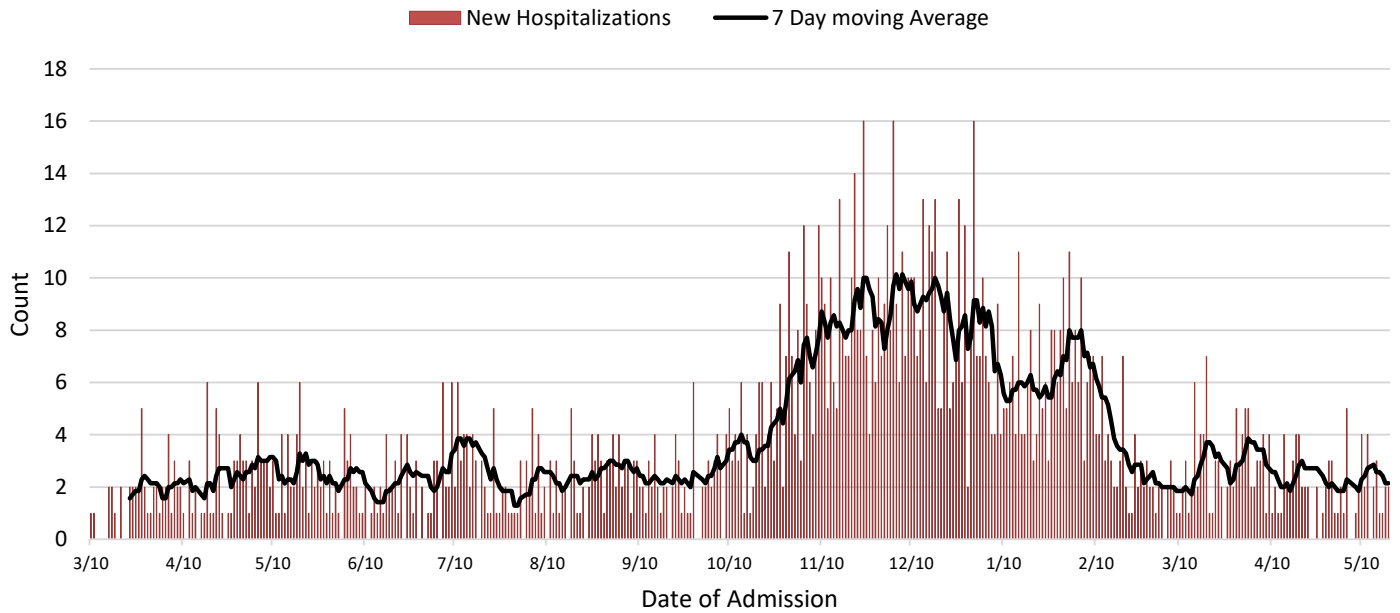
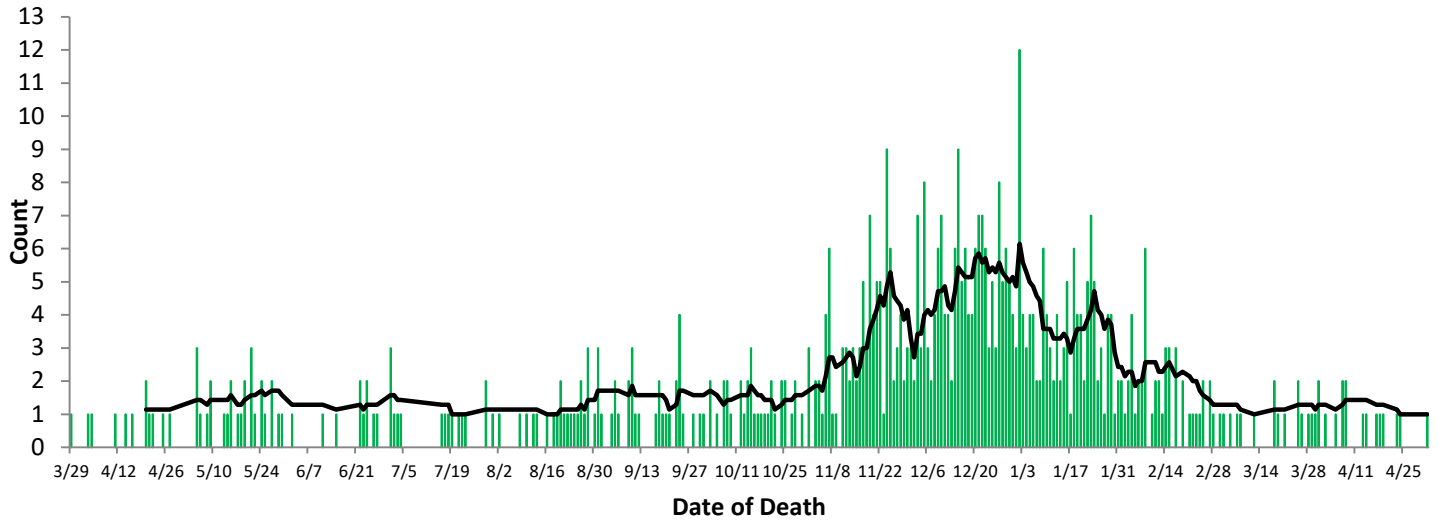


Figure 5. Confirmed COVID-19 Deaths by date of death, 2020-21**



All figures show reported cases of COVID-19 in Butler County as of 1700 EDT 05/22/2021. Due to delays in reporting, the numbers of confirmed and probable cases on all figures are subject to change between reports and **confirmed and probable case counts are likely to increase.** ****This should not be assumed to be the total disease burden of COVID-19 in Butler County only those that have been laboratory confirmed OR meet ODH probable case criteria AND reported to Public Health.**

*Data is provisional – only confirmed or probable COVID-19 cases are included in counts. Report reflects time period since the introduction of SARS-CoV-2 into humans, measured in days. Data accessed from the Ohio Disease Reporting System (ODRS) on 05/22/2021 at 1700 EST.

Deaths are now reconciled to the Ohio Department of Health's available data to avoid discrepancies between the state and local numbers. ODH's protocol has changed to avoid reconciliation errors and now only includes those deaths that have been reconciled with Vital statistics and may not match what has been reported to the CDC which are provisional numbers. **This is a lagging indicator and will be multiple weeks behind.

#Data collected from Ohio Impact-SIIS 05/22/2021 # Map and Table created by the Ohio Department of Health

Figure 6. Butler County Data analysis performed by Cincinnati Children's Hospital Week of 5/08*

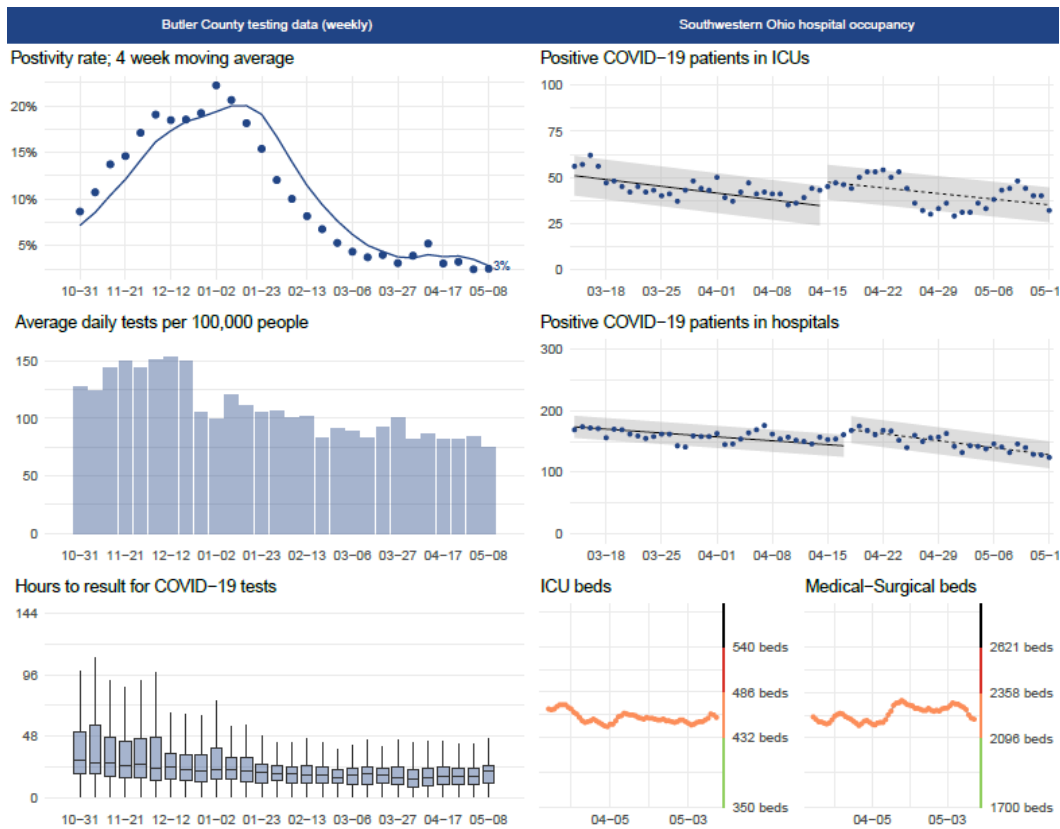
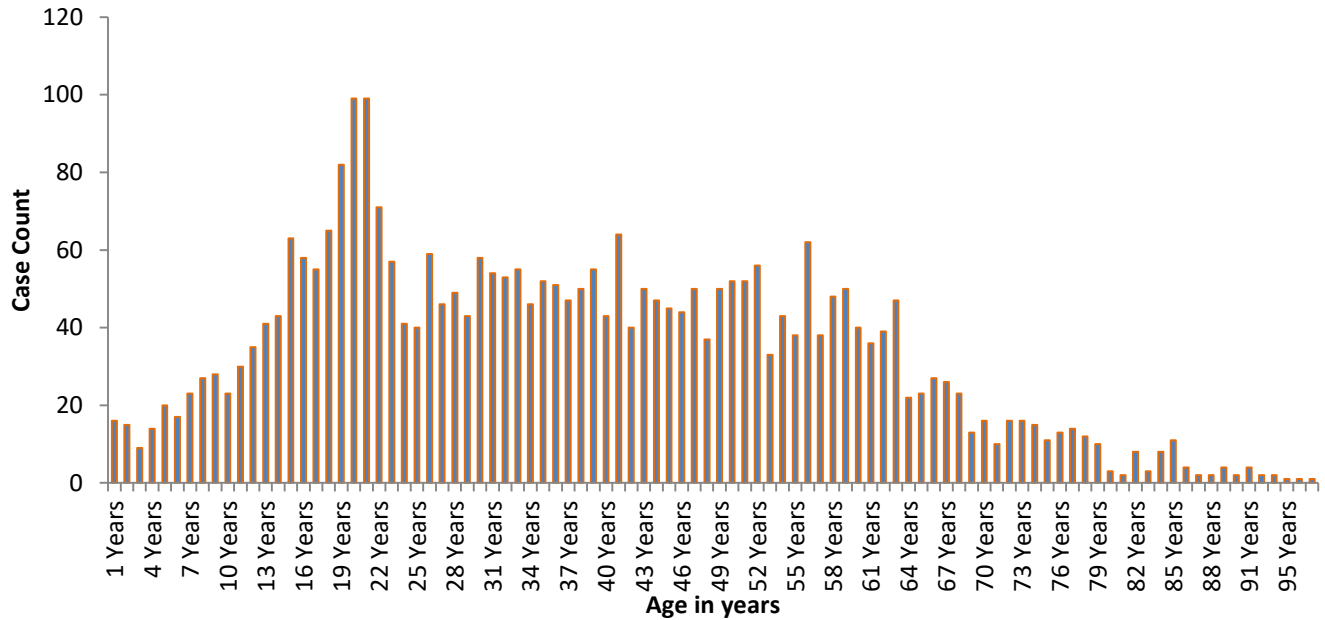


Figure 7. Age distribution of COVID-19 Cases reported Since March 1, 2021



All figures show reported cases of COVID-19 in Butler County as of 1700 EDT 05/22/2021. Due to delays in reporting, the numbers of confirmed and probable cases on all figures are subject to change between reports and confirmed and probable case counts are likely to increase. **This should not be assumed to be the total disease burden of COVID-19 in Butler County only those that have been laboratory confirmed OR meet ODH probable case criteria AND reported to Public Health.

*Data is provisional – only confirmed or probable COVID-19 cases are included in counts. Report reflects time period since the introduction of SARS-CoV-2 into humans, measured in days. Data accessed from the Ohio Disease Reporting System (ODRS) on 05/22/2021 at 1700 EST.

**Deaths are now reconciled to the Ohio Department of Health's available data to avoid discrepancies between the state and local numbers. ODH's protocol has changed to avoid reconciliation errors and now only includes those deaths that have been reconciled with Vital statistics and may not match what has been reported to the CDC which are provisional numbers. This is a lagging indicator and will be multiple weeks behind.

#Data collected from Ohio Impact-SIIS 05/22/2021 ## Map and Table created by the Ohio Department of Health

Figure 8. Cases by Date of Report Since March 1, 2021

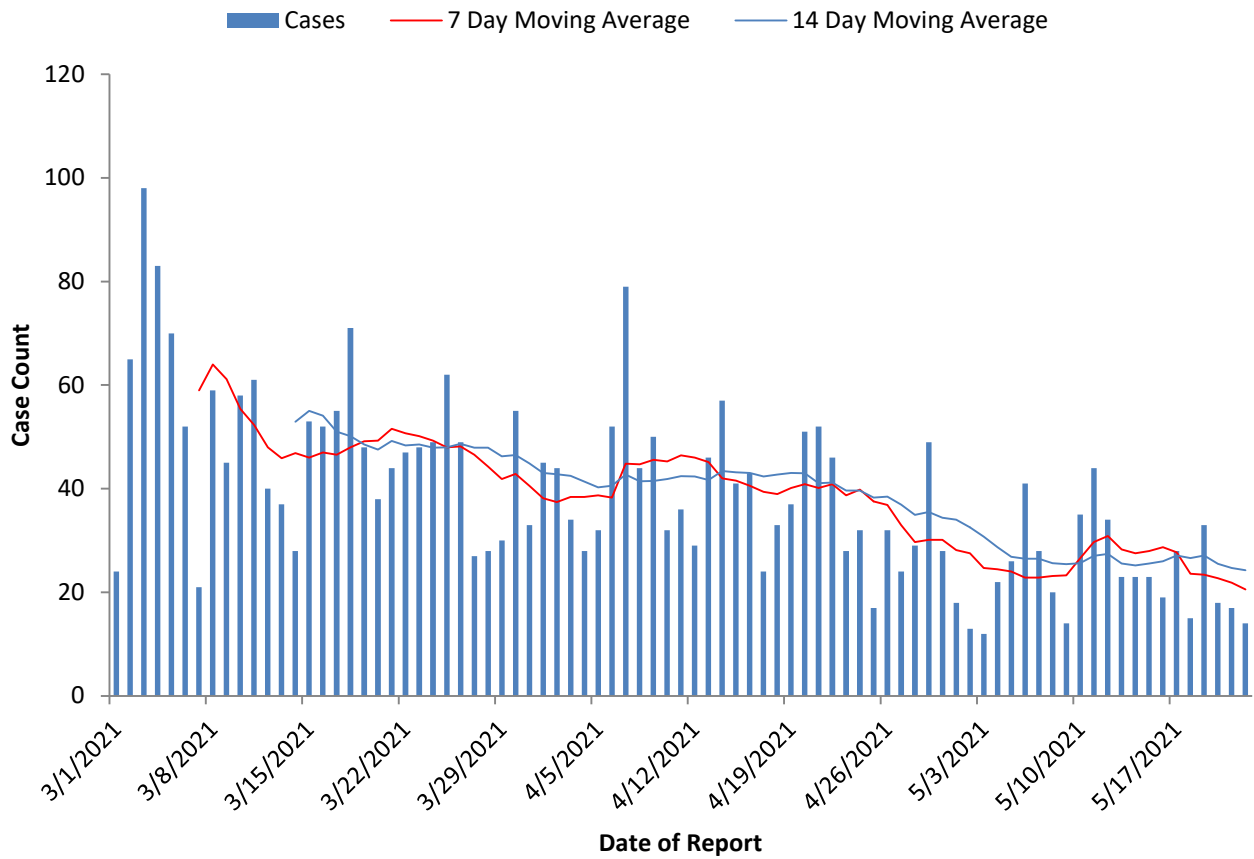
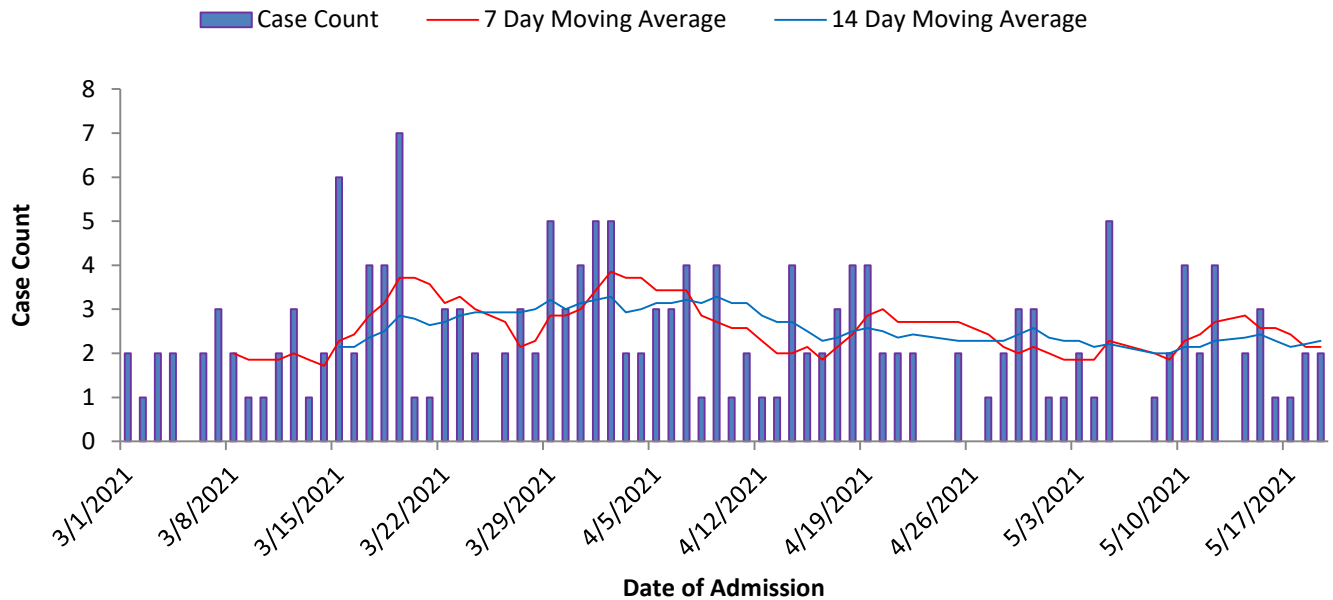


Figure 9. Hospitalizations Since March 1, 2021



All figures show reported cases of COVID-19 in Butler County as of 1700 EDT 05/22/2021. Due to delays in reporting, the numbers of confirmed and probable cases on all figures are subject to change between reports and confirmed and probable case counts are likely to increase. **This should not be assumed to be the total disease burden of COVID-19 in Butler County only those that have been laboratory confirmed OR meet ODH probable case criteria AND reported to Public Health.

*Data is provisional – only confirmed or probable COVID-19 cases are included in counts. Report reflects time period since the introduction of SARS-CoV-2 into humans, measured in days. Data accessed from the Ohio Disease Reporting System (ODRS) on 05/22/2021 at 1700 EST.

**Deaths are now reconciled to the Ohio Department of Health's available data to avoid discrepancies between the state and local numbers. ODH's protocol has changed to avoid reconciliation errors and now only includes those deaths that have been reconciled with Vital statistics and may not match what has been reported to the CDC which are provisional numbers. This is a lagging indicator and will be multiple weeks behind.

#Data collected from Ohio Impact-SIIS 05/22/2021 ## Map and Table created by the Ohio Department of Health

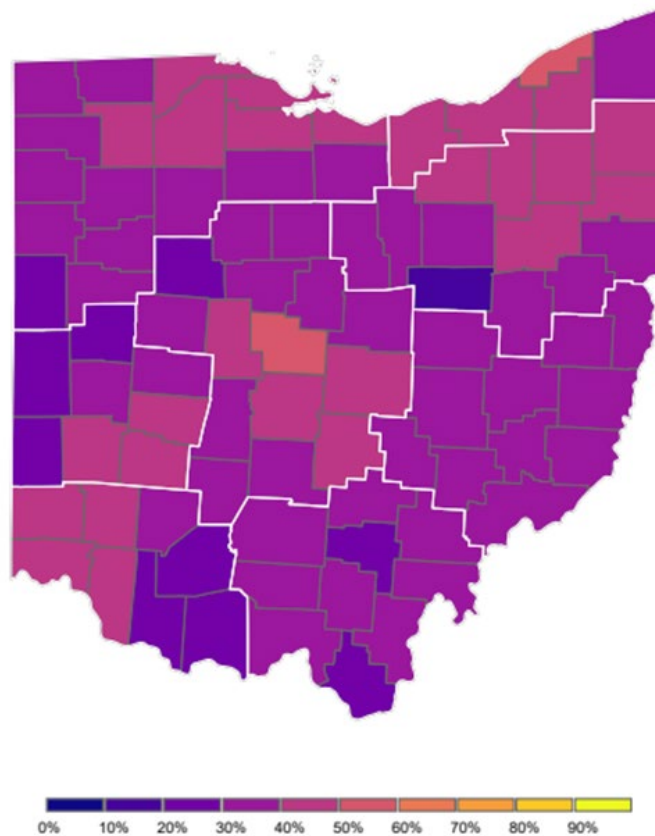
COVID-19 Vaccinations in Butler County

% of Butler County Started Vaccination:	41.2%
% of Ohio Started Vaccination:	44.2%
# Vaccinations Started in Butler County by All Partners:	157,639
# Vaccinations Completed in Butler County by All Partners:	136,051
# Vaccines Started in Ohio:	5,160,569
# Vaccines Completed in Ohio:	4,522,385

Table 5. Percentage of Vaccine Started and Completed by Age group in Butler County[#]

Age Group	Vaccine Started	Vaccine Completed
0-19	8.6%	4.84%
20-29	31.3%	25.67%
30-39	41.7%	34.43%
40-49	48.9%	41.88%
50-59	57.3%	50.74%
60-64	68.5%	62.02%
65-69	76.1%	70.1%
70-74	82.3%	76.8%
75-79	77.6%	72.8%
80+	75.5%	71.2%

Figure 10. % of Ohio Population with Vaccination Started^{##}



All figures show reported cases of COVID-19 in Butler County as of 1700 EDT 05/22/2021. Due to delays in reporting, the numbers of confirmed and probable cases on all figures are subject to change between reports and **confirmed and probable case counts are likely to increase.** ****This should not be assumed to be the total disease burden of COVID-19 in Butler County only those that have been laboratory confirmed OR meet ODH probable case criteria AND reported to Public Health.**

[#]Data is provisional – only confirmed or probable COVID-19 cases are included in counts. Report reflects time period since the introduction of SARS-CoV-2 into humans, measured in days. Data accessed from the Ohio Disease Reporting System (ODRS) on 05/22/2021 at 1700 EST.

^{##}Deaths are now reconciled to the Ohio Department of Health's available data to avoid discrepancies between the state and local numbers. ODH's protocol has changed to avoid reconciliation errors and now only includes those deaths that have been reconciled with Vital statistics and may not match what has been reported to the CDC which are provisional numbers. **This is a lagging indicator and will be multiple weeks behind.**

[#]Data collected from Ohio Impact-SIIS 05/22/2021 ^{##} Map and Table created by the Ohio Department of Health