

# Butler County General Health District's 102<sup>nd</sup> COVID-19 Update (02/05/2022)

## Confirmed and Probable COVID-19 Cases Reported to Butler County\*

Butler County Residents, 2020-22

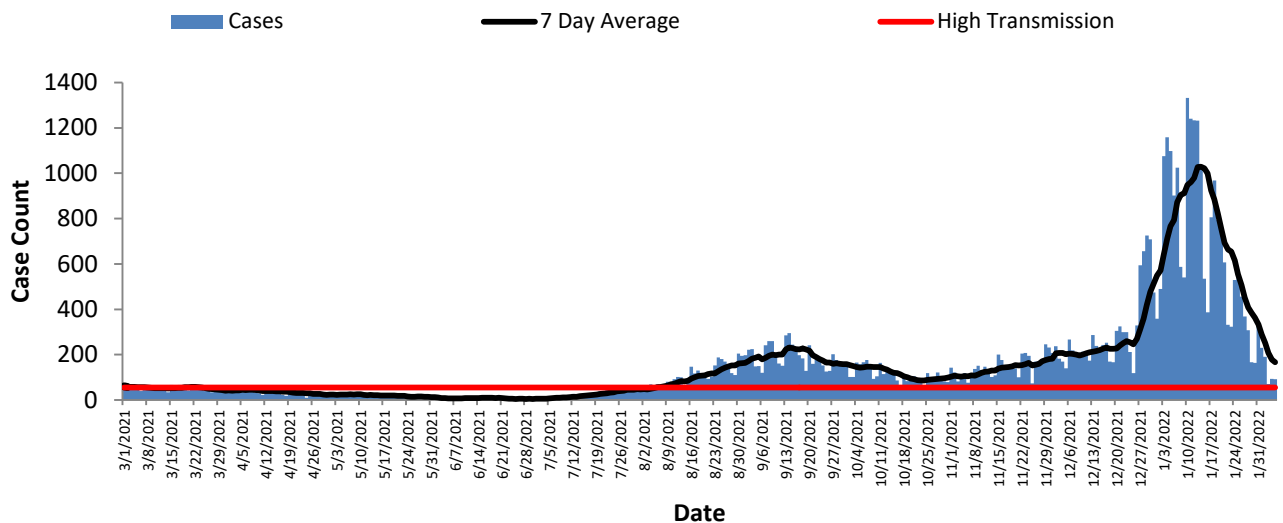
<b>Total # of Cases (02/05):</b>	<b>89,133*</b>
<b>ODH verified Deaths (02/05):</b>	<b>1020**</b>
<b>Hospitalizations (02/05):</b>	<b>3,054</b>
<b>First Case Reported:</b>	3/11/2020
<b>Last Case Reported (so far):</b>	02/05/2022
<b>Confirmed Cases:</b>	<b>69,153</b>
<b>Probable Cases:</b>	<b>19,980</b>
<b>Age Range:</b>	<1-103
<b>Median Age:</b>	<b>37</b>
<b>Mean Age:</b>	38.4
<b>Incidence (thru 02/05):</b>	23,264.2 per 100,000
<b>Prevalence (thru 02/05):</b>	<b>23.3% of BC population</b>
<b>7-Day Positivity Rate (02/10):</b>	<b>21.75<sup>#</sup>% of tests performed in BC</b>

Table 1: CDC Indicators		
Indicator	Butler County New Cases over 7 days	Status Level According to CDC
<b>Incidence per 100,000 population</b>	<b>304.3 per 100,000</b>	<b>High Spread (over 100 per 100,000)</b>
<b>Positivity Rate</b>	<b>21.75% of tests performed in Butler County</b>	<b>High Positivity (over 10.0% of tests)</b>

This report has transitioned from using the target indicators that Governor DeWine and the Ohio Department of Health had previously set to the CDC's Community Transmission Indicators. The CDC has its own data tracker that is accessible at <https://covid.cdc.gov/covid-data-tracker/#datatracker-home>, which gives a good picture of how the nation as a whole is doing. They also have county tracking information, but as CDC mentions, local reports will be more up-to-date and should be considered more definitive.

Butler County's figures match national figures. There appears to have been notable decline in cases from the previous weeks. The positivity rate and test volume have also declined. While cases are declining, incidence remains very high.

**Figure 1. Cases by Date of Event Since March 1, 2021**



All figures show reported cases of COVID-19 in Butler County as of 0800 EST 02/10/2022. Due to delays in reporting, the numbers of confirmed and probable cases on all figures are subject to change between reports and **confirmed and probable case counts are likely to increase.** \*This should not be assumed to be the total disease burden of COVID-19 in Butler County only those that have been laboratory confirmed OR meet ODH probable case criteria AND reported to Public Health.

<sup>#</sup>Data is provisional – only confirmed or probable COVID-19 cases are included in counts. Report reflects time period since the introduction of SARS-CoV-2 into humans, measured in days. Data accessed from the Ohio Disease Reporting System (ODRS) on 02/10/2022 at 0800 EST.

\*\*Deaths are now reconciled to the Ohio Department of Health's available data to avoid discrepancies between the state and local numbers. ODH's protocol has changed to avoid reconciliation errors and now only includes those deaths that have been reconciled with Vital statistics and may not match what has been reported to the CDC which are provisional numbers. **This is a lagging indicator and will be multiple weeks behind.**

Vaccination numbers were collected 1200 EST 02/10/2022 from ODH COVID-19 Dashboard and the Innovate Ohio Platform. Vaccinations are considered started on the day an individual receives first dose of a COVID-19 vaccine. Vaccinations are considered completed on the day an individual receives the final recommended dose of a vaccine.

<sup>#</sup>Gathered from CDC's Data Tracker of Butler County 02/10/2022 0800 EST accessible at <https://covid.cdc.gov/covid-data-tracker/#county-view>

Figure 2. Reported Cases of COVID-19 by Date of Event 2020-2021\*

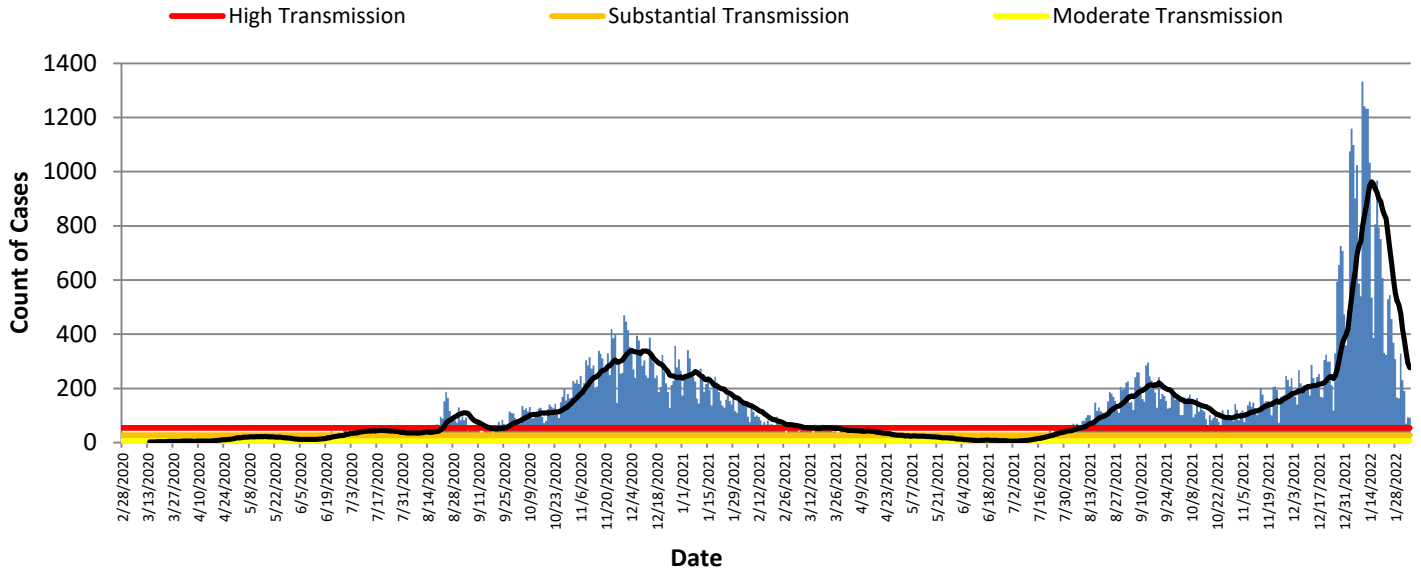


Table 2: Total Reported* Cases by ZIP Code						
ZIP Code	Number of Cases	New Cases (01/23-02/05)	Change in cases from previous 7 days (01/16-01/22)	Transmission	% of Cases	
45011	16297	200	-287 (-58.9%)	High	18.3%	
45044	12741	189	-221 (-53.9%)	High	14.3%	
45013	12137	142	-243 (-63.1%)	High	13.6%	
45069	11532	176	-156 (-47.0%)	High	12.9%	
45014	10687	114	-125 (-52.3%)	High	12.0%	
45056	5743	130	-57 (-30.5%)	High	6.4%	
45042	6089	65	-148 (-69.5%)	High	6.8%	
45067	3654	42	-88 (-67.7%)	High	4.1%	
45050	2584	24	-51 (-68.0%)	High	2.9%	
45015	2599	23	-67 (-74.4%)	High	2.9%	
45241	1334	26	-24 (-48.0%)		1.5%	
45053	674	10	-4 (-28.6%)	High	0.8%	
45005	577	7	-21 (-75.0%)		0.6%	
45064	349	6	-5 (-45.5%)		0.4%	
45246	168	0	-6 (-100.0%)		0.2%	
45062	135	0	-5 (-100.0%)		0.2%	
Cases lacking zip code information or from zip codes with too few cases	1,833	12	-	-	2.1%	
<b>Butler County (inclusive)</b>	<b>89,133</b>	<b>1,166</b>	<b>-1,529 (-56.7%)</b>	<b>High</b>	<b>100%</b>	

Zip-codes that have transmissions not rated have most of their populations outside of Butler County. Zip-codes with too few cases have been removed for privacy concerns.

**New Cases are determined by "Date of Event" which is when the case was ill/test was collected. CDC determines new cases by "Date of Report".**

Table 2 shows the zip-code level data that is new for this week. **All zip-codes** have rates of disease that once again meet the CDC's definition of a **community of high transmission**. Almost all zip-codes are seeing record levels of transmission.

All figures show reported cases of COVID-19 in Butler County as of 0800 EST 02/10/2022. Due to delays in reporting, the numbers of confirmed and probable cases on all figures are subject to change between reports and confirmed and probable case counts are likely to increase. \*This should not be assumed to be the total disease burden of COVID-19 in Butler County only those that have been laboratory confirmed OR meet ODH probable case criteria AND reported to Public Health.

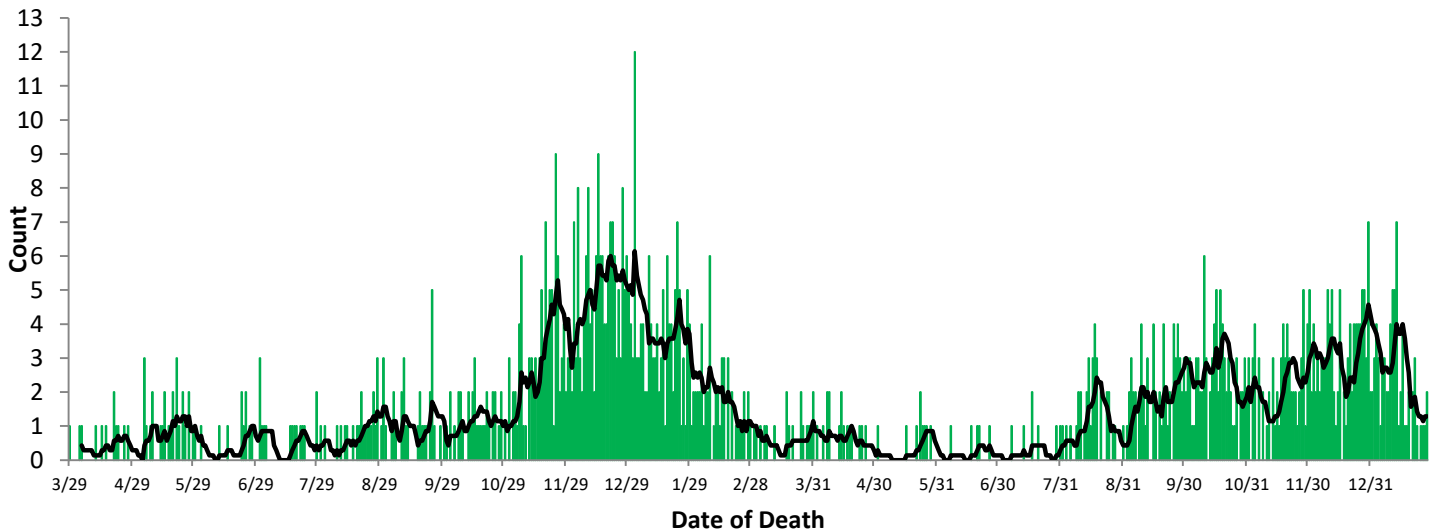
\*Data is provisional – only confirmed or probable COVID-19 cases are included in counts. Report reflects time period since the introduction of SARS-CoV-2 into humans, measured in days. Data accessed from the Ohio Disease Reporting System (ODRS) on 02/10/2022 at 0800 EST.

\*\*Deaths are now reconciled to the Ohio Department of Health's available data to avoid discrepancies between the state and local numbers. ODH's protocol has changed to avoid reconciliation errors and now only includes those deaths that have been reconciled with Vital statistics and may not match what has been reported to the CDC which are provisional numbers. This is a lagging indicator and will be multiple weeks behind.

Vaccination numbers were collected 1200 EST 02/10/2022 from ODH COVID-19 Dashboard and the Innovate Ohio Platform. Vaccinations are considered started on the day an individual receives first dose of a COVID-19 vaccine. Vaccinations are considered completed on the day an individual receives the final recommended dose of a vaccine.

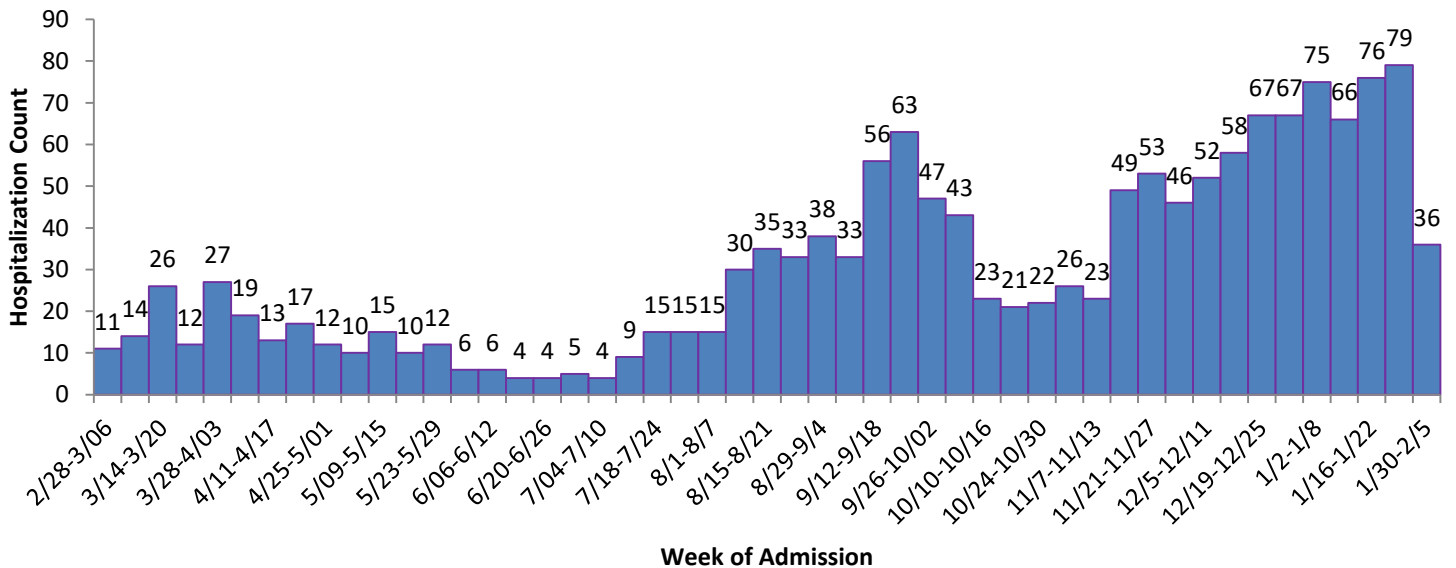
#Gathered from CDC's Data Tracker of Butler County 02/10/2022 0800 EST accessible at <https://covid.cdc.gov/covid-data-tracker/#county-view>

**Figure 3. Confirmed COVID-19 Deaths by date of death, 2020-22\*\***



Figures 3 and 4 show severe case outcomes. These are both lagging indicators since it typically takes time for a case to succumb to COVID and well over a month for a COVID-19 death to be verified. Deaths will take about 4-6 weeks to begin to register for last week. Hospitalized case reports are coming in to BCGHD and these are most likely undercounts due to lags in getting reported cases entered in to the Ohio Disease Reporting System.

**Figure 4. COVID-19 Hospitalizations of Butler County Residents by Week since the first week of March 2021**



All figures show reported cases of COVID-19 in Butler County as of 0800 EST 02/10/2022. Due to delays in reporting, the numbers of confirmed and probable cases on all figures are subject to change between reports and confirmed and probable case counts are likely to increase. \*This should not be assumed to be the total disease burden of COVID-19 in Butler County only those that have been laboratory confirmed OR meet ODH probable case criteria AND reported to Public Health.

\*\*Data is provisional – only confirmed or probable COVID-19 cases are included in counts. Report reflects time period since the introduction of SARS-CoV-2 into humans, measured in days. Data accessed from the Ohio Disease Reporting System (ODRS) on 02/10/2022 at 0800 EST.

\*\*Deaths are now reconciled to the Ohio Department of Health’s available data to avoid discrepancies between the state and local numbers. ODH’s protocol has changed to avoid reconciliation errors and now only includes those deaths that have been reconciled with Vital statistics and may not match what has been reported to the CDC which are provisional numbers. This is a lagging indicator and will be multiple weeks behind.

Vaccination numbers were collected 1200 EST 02/10/2022 from ODH COVID-19 Dashboard and the Innovate Ohio Platform. Vaccinations are considered started on the day an individual receives first dose of a COVID-19 vaccine. Vaccinations are considered completed on the day an individual receives the final recommended dose of a vaccine.

#Gathered from CDC’s Data Tracker of Butler County 02/10/2022 0800 EST accessible at <https://covid.cdc.gov/covid-data-tracker/#county-view>