

Butler County General Health District's 104th COVID-19 Update (02/19/2022)

Confirmed and Probable COVID-19 Cases Reported to Butler County* Butler County Residents, 2020-22

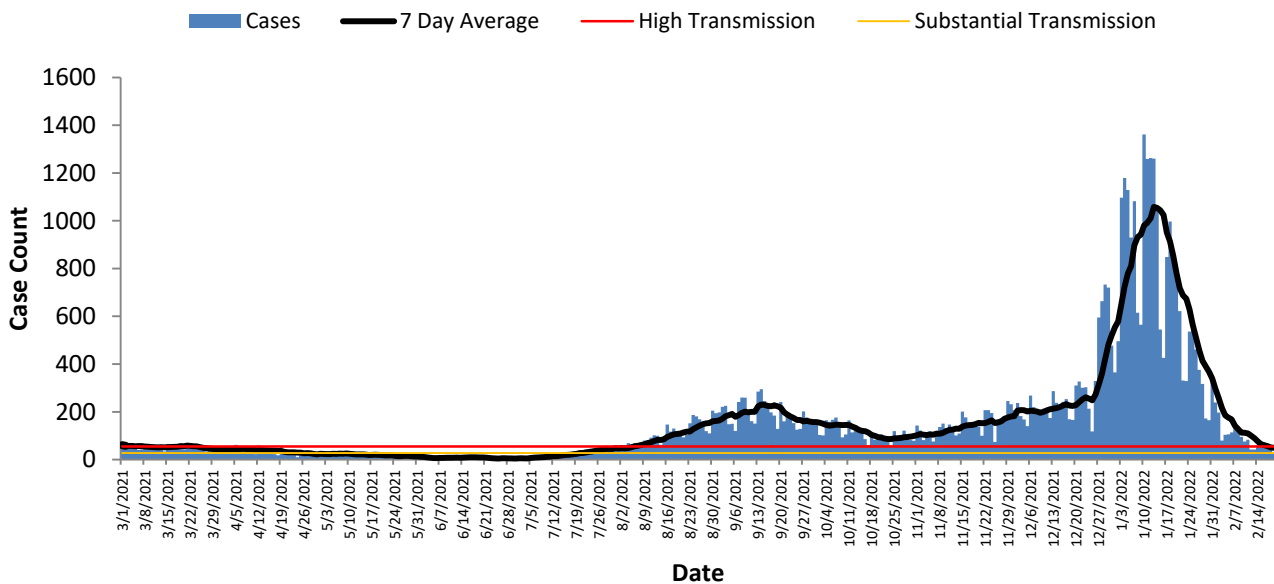
Total # of Cases (02/19):	90,869*
ODH verified Deaths (02/19):	1079**
Hospitalizations (02/19):	3,114
First Case Reported:	3/11/2020
Last Case Reported (so far):	02/19/2022
Confirmed Cases:	70,066
Probable Cases:	20,803
Age Range:	<1-103
Median Age:	37
Mean Age:	38.4
Incidence (thru 02/19):	23,717.3 per 100,000
Prevalence (thru 02/19):	23.7% of BC population
7-Day Positivity Rate (02/24):	7.7%# of tests performed in BC

Table 1: CDC Indicators		
Indicator	Butler County New Cases over 7 days	Status Level According to CDC
Incidence per 100,000 population	90.05 per 100,000	Substantial Spread (50.0-99.9 per 100,000)
Positivity Rate	7.66% of tests performed in Butler County	Moderate Positivity (5.0-7.99% of tests)

This report has transitioned from using the target indicators that Governor DeWine and the Ohio Department of Health had previously set to the CDC's Community Transmission Indicators. The CDC has its own data tracker that is accessible at <https://covid.cdc.gov/covid-data-tracker/#datatracker-home>, which gives a good picture of how the nation as a whole is doing. They also have county tracking information, but as CDC mentions, local reports will be more up-to-date and should be considered more definitive.

Butler County has left high transmission and high positivity for the first time since August 2021. Cases dropped by over 50% this week which continues to fit the trends of the last month.

Figure 1. Cases by Date of Event Since March 1, 2021



All figures show reported cases of COVID-19 in Butler County as of 0800 EST 02/24/2022. Due to delays in reporting, the numbers of confirmed and probable cases on all figures are subject to change between reports and confirmed and probable case counts are likely to increase. *This should not be assumed to be the total disease burden of COVID-19 in Butler County only those that have been laboratory confirmed OR meet ODH probable case criteria AND reported to Public Health.

*Data is provisional – only confirmed or probable COVID-19 cases are included in counts. Report reflects time period since the introduction of SARS-CoV-2 into humans, measured in days. Data accessed from the Ohio Disease Reporting System (ODRS) on 02/24/2022 at 0800 EST.

**Deaths are now reconciled to the Ohio Department of Health's available data to avoid discrepancies between the state and local numbers. ODH's protocol has changed to avoid reconciliation errors and now only includes those deaths that have been reconciled with Vital statistics and may not match what has been reported to the CDC which are provisional numbers. This is a lagging indicator and will be multiple weeks behind.

#Gathered from CDC's Data Tracker of Butler County 02/24/2022 0800 EST accessible at <https://covid.cdc.gov/covid-data-tracker/#county-view>

Figure 2. Reported Cases of COVID-19 by Date of Event 2020-2021*

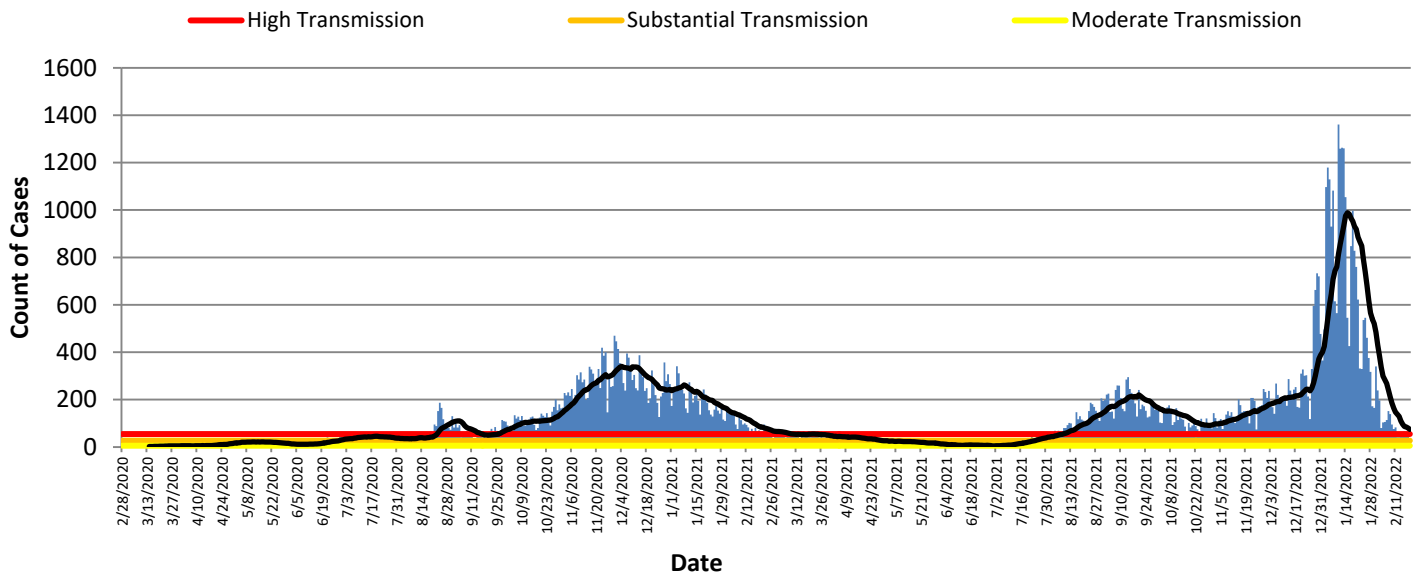


Table 2: Total Reported* Cases by ZIP Code						
ZIP Code	Number of Cases	New Cases (02/06-02/19)	Change in cases from previous 7 days (01/30-02/05)	Transmission	% of Cases	
45011	16637	55	-70 (-56.0%)	Substantial	18.3%	
45044	12969	46	-50 (-52.1%)	Substantial	14.3%	
45013	12347	49	-32 (-39.5%)	Substantial	13.6%	
45069	11751	47	-50(-51.5%)	Substantial	12.9%	
45014	10852	31	-23 (-42.6%)	Substantial	11.9%	
45056	5922	40	-67 (-62.6%)	High	6.5%	
45042	6185	17	-32 (-65.3%)	Substantial	6.8%	
45067	3728	13	-7 (-35.0%)	Substantial	4.1%	
45050	2652	13	-9 (-40.9%)	High	2.9%	
45015	2652	14	0 (0%)	High	2.9%	
45241	1364	6	-3 (-33.3%)		1.5%	
45053	678	2	2(NA%)	Substantial	0.7%	
45005	587	1	-4(-80%)		0.7%	
45064	363	4	-5(-55.6%)		0.4%	
45246	170	0	-2 (-100.0%)		0.2%	
45062	138	0	-2 (-100.0%)		0.2%	
Cases lacking zip code information or from zip codes with too few cases	1,874	7		-	2.0%	
Butler County (inclusive)	90,869	345	-356 (-50.78%)	Substantial	100%	

Zip-codes that have transmissions not rated have most of their populations outside of Butler County. Zip-codes with too few cases have been removed for privacy concerns.

New Cases are determined by "Date of Event" which is when the case was ill/test was collected. CDC determines new cases by "Date of Report".

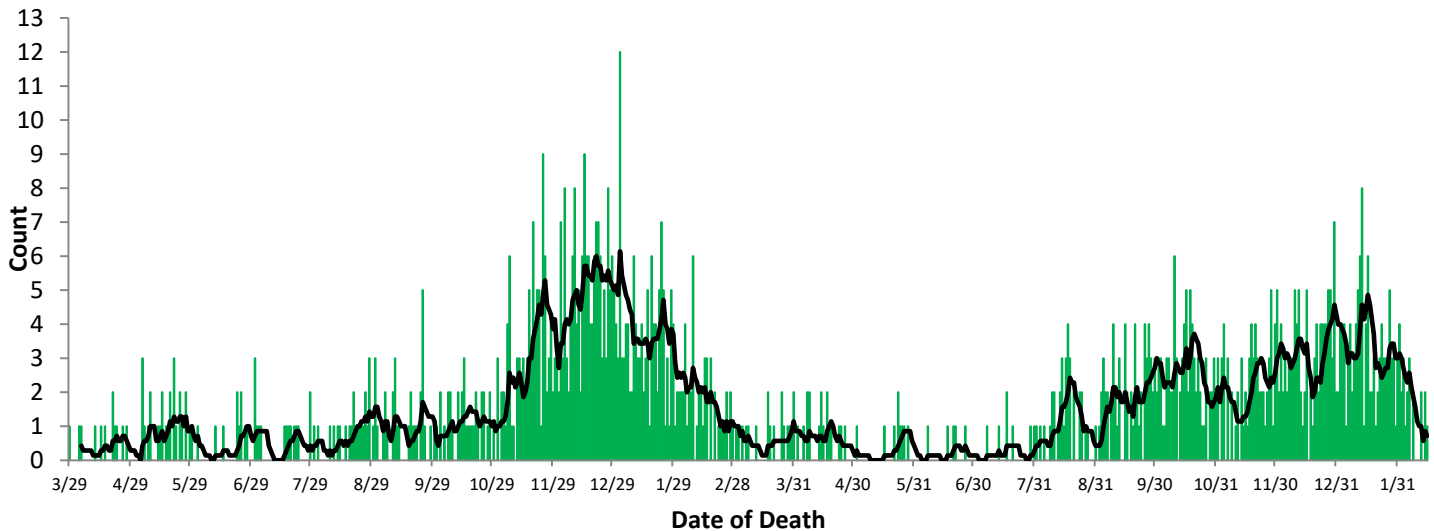
Table 2 shows the zip-code level data that is new for this week.

All figures show reported cases of COVID-19 in Butler County as of 0800 EST 02/24/2022. Due to delays in reporting, the numbers of confirmed and probable cases on all figures are subject to change between reports and confirmed and probable case counts are likely to increase. *This should not be assumed to be the total disease burden of COVID-19 in Butler County only those that have been laboratory confirmed OR meet ODH probable case criteria AND reported to Public Health.

**Deaths are now reconciled to the Ohio Department of Health's available data to avoid discrepancies between the state and local numbers. ODH's protocol has changed to avoid reconciliation errors and now only includes those deaths that have been reconciled with Vital statistics and may not match what has been reported to the CDC which are provisional numbers. This is a lagging indicator and will be multiple weeks behind.

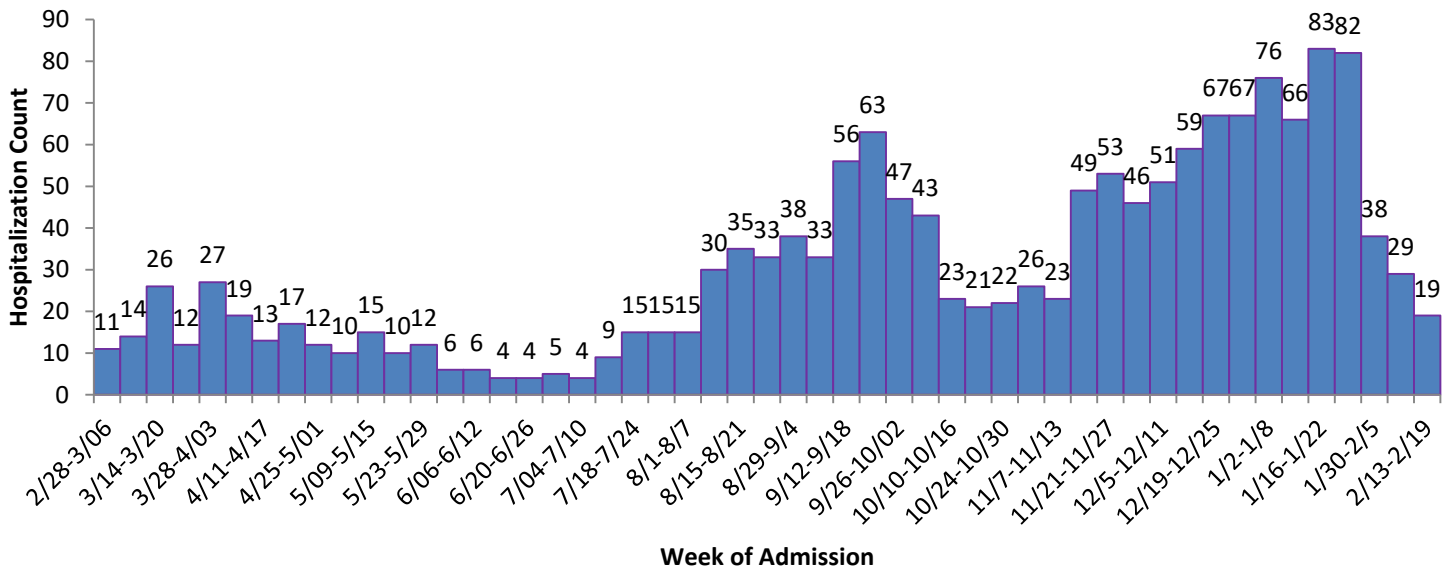
#Gathered from CDC's Data Tracker of Butler County 02/24/2022 0800 EST accessible at <https://covid.cdc.gov/covid-data-tracker/#county-view>

Figure 3. Confirmed COVID-19 Deaths by date of death, 2020-22**



Figures 3 and 4 show severe case outcomes. These are both lagging indicators since it typically takes time for a case to succumb to COVID and well over a month for a COVID-19 death to be verified. Deaths will take about 4-6 weeks to begin to register for last week. Hospitalizations are currently declining, and death reports from the omicron surge are still coming in, but it appears to be tapering off.

Figure 4. COVID-19 Hospitalizations of Butler County Residents by Week since the first week of March 2021



All figures show reported cases of COVID-19 in Butler County as of 0800 EST 02/24/2022. Due to delays in reporting, the numbers of confirmed and probable cases on all figures are subject to change between reports and confirmed and probable case counts are likely to increase. *This should not be assumed to be the total disease burden of COVID-19 in Butler County only those that have been laboratory confirmed OR meet ODH probable case criteria AND reported to Public Health.

**Data is provisional – only confirmed or probable COVID-19 cases are included in counts. Report reflects time period since the introduction of SARS-CoV-2 into humans, measured in days. Data accessed from the Ohio Disease Reporting System (ODRS) on 02/24/2022 at 0800 EST.

**Deaths are now reconciled to the Ohio Department of Health's available data to avoid discrepancies between the state and local numbers. ODH's protocol has changed to avoid reconciliation errors and now only includes those deaths that have been reconciled with Vital statistics and may not match what has been reported to the CDC which are provisional numbers. This is a lagging indicator and will be multiple weeks behind.

#Gathered from CDC's Data Tracker of Butler County 02/24/2022 0800 EST accessible at <https://covid.cdc.gov/covid-data-tracker/#county-view>