

Butler County General Health District COVID-19 Update (1/23/2021)

Confirmed and Probable COVID-19 Cases Reported to Butler County*

Butler County Residents, 2020

Total # of Cases (1/23):	31,033*
Confirmed Deaths (1/23):	229
Hospitalizations (1/23):	940
ICU admissions (1/23):	97
First Case Reported:	3/11/23020
Last Case Reported (so far):	1/23/2021
Confirmed Cases:	29,340
Probable Cases:	1,693
Age Range:	<1-103
Median Age:	40
Mean Age:	41.5
Mean Age of Deaths:	75.8
Incidence:	810.0 per 10,000
Prevalence (3/11-1/23):	8.1% of BC population

Table 1: Total Reported* Cases by ZIP Code

ZIP Code	Number of Cases	Change from previous week	Rate per 10,000	% of Confirmed Cases	Total deaths
45011	5395	↑242 (4.7%) From 5153	774.3	17.4%	31
45013	4220	↑176 (4.4%) from 4044	802.1	13.6%	57
45044	4125	↑ 207 (5.3%) from 3918	780.9	13.3%	38
45014	3945	↑ 193 (5.1%) from 3752	898.3	12.7%	43
45069	3825	↑201 (5.5%) from 3624	779.7	12.3%	13
45056	2792	↑78 (2.9%) from 2714	1032.6	9.0%	11
45042	2053	↑ 71 (3.6%) from 1982	776.2	6.6%	7
45067	1249	↑77 (6.6%) from 1172	898.7	4.0%	-
45050	898	↑34(3.9%) from 864	1050.5	2.9%	6
45015	830	↑ 37(4.7%) from 793	689.5	2.7%	15
45241	507	↑18 (3.7%) from 489		1.6%	-
45053	263	↑ 15 (6.0%) from 248	769.0	0.8%	-
45064	121	↑ 7 (6.1%) from 114		0.4%	-
45246	51	↑0 (0%) from 51		0.2%	-
45062	47	↑ 1 (2.2%) from 46		0.2%	-
Cases lacking zip code information or from zip codes with too few cases	712	-	-	2.4%	8
Butler County (inclusive)	31,033	↑ 1,392 (4.7%) from 29641	773.7	100%	229
Zip-codes not calculated have most of their population outside of Butler County. Rate given for comparison by population and will be higher than the actual amount. Zip-codes with too few cases have been removed for privacy concerns.					

All figures show reported cases of COVID-19 in Butler County as of 1700 EDT 1/23/2020. Due to delays in reporting, the numbers of confirmed and probable cases on all figures are subject to change between reports and confirmed and probable case counts are likely to increase. *This should not be assumed to be the total disease burden of COVID-19 in Butler County only those that have been laboratory confirmed OR meet ODH probable case criteria AND reported to Public Health.

*Data is provisional – only confirmed or probable COVID-19 cases are included in counts. Report reflects time period since the introduction of SARS-CoV-2 into humans, measured in days. Data accessed from the Ohio Disease Reporting System (ODRS) on 1/23/2021 at 1700 EST.

Figure 1. New Hospitalizations of Butler County Residents by Admission Date, 2020-21*

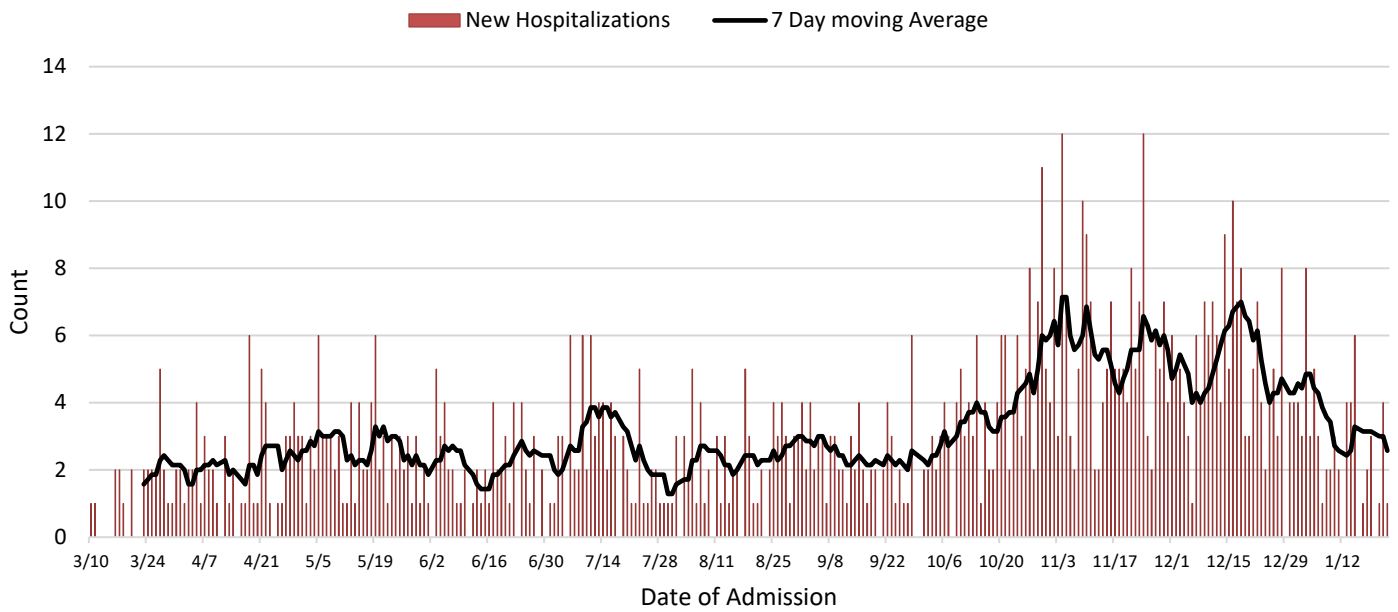
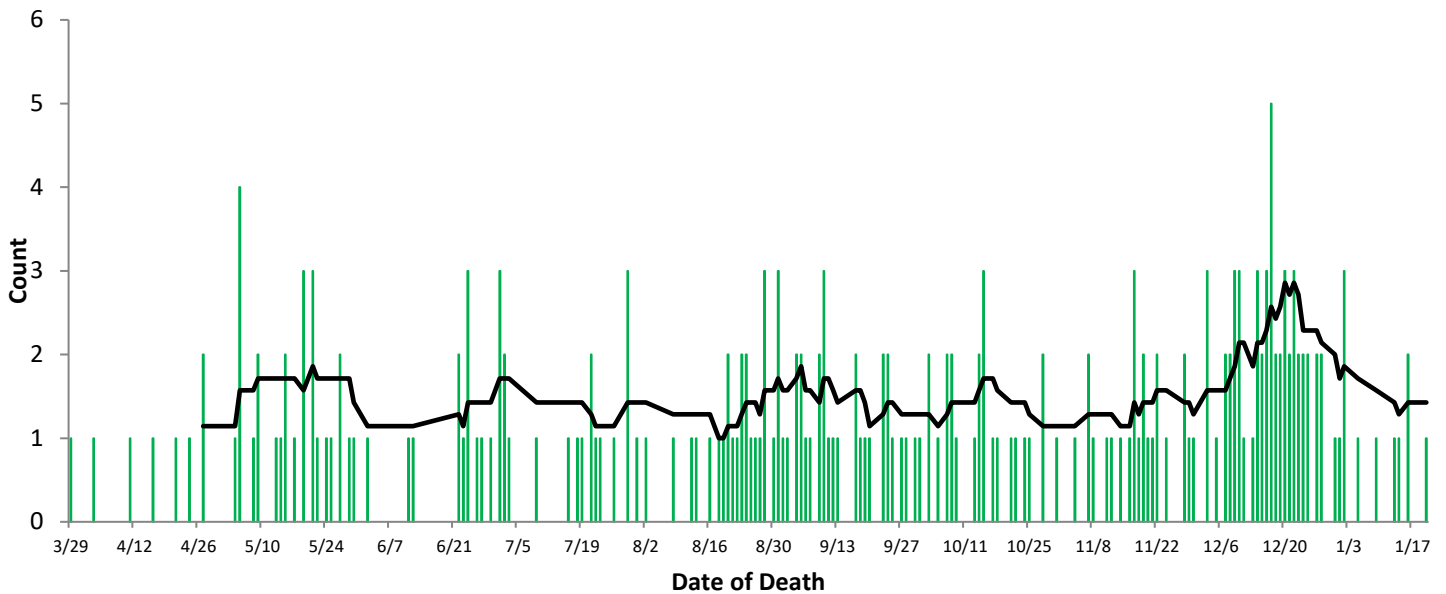


Figure 2. Confirmed COVID-19 Deaths by date of death, 2020-21*



Deaths are only included if they are confirmed by case definition.

All figures show reported cases of COVID-19 in Butler County as of 1700 EDT 1/23/2021. Due to delays in reporting, the numbers of confirmed and probable cases on all figures are subject to change between reports and confirmed and probable case counts are likely to increase. *This should not be assumed to be the total disease burden of COVID-19 in Butler County only those that have been laboratory confirmed OR meet ODH probable case criteria AND reported to Public Health.

*Data is provisional – only confirmed or probable COVID-19 cases are included in counts. Report reflects time period since the introduction of SARS-CoV-2 into humans, measured in days. Data accessed from the Ohio Disease Reporting System (ODRS) on 1/23/2021 at 1700 EST.

Table 2. New Reports by MMWR Week, 2020

MMWR Week	End of Week	New Cases Reported (by date of report)	New Hospitalizations (by date of report)	New Confirmed Deaths (by date of death)
11	3/14	6	1	0
12	3/21	10	3	0
13	3/28	11	6	0
14	4/4	46	18	2
15	4/11	50	16	1
16	4/18	43	10	1
17	4/25	55	19	2
18	5/2	99	16	2
19	5/9	134	18	8
20	5/16	136	17	4
21	5/23	186	26	8
22	5/30	113	12	6
23	6/6	114	16	1
24	6/13	89	10	2
25	6/20	116	13	0
26	6/27	168	19	8
27	7/4	198	10	7
28	7/11	285	18	1
29	7/18	262	26	2
30	7/25	269	12	5
31	8/1	279	9	5
32	8/8	244	17	2
33	8/15	267	14	2
34	8/22	266	14	8
35	8/29	552	24	10
36	9/5	782	14	10
37	9/12	503	18	9
38	9/19	371	17	5
39	9/26	383	14	6
40	10/3	510	10	6
41	10/10	594	16	5
42	10/17	689	28	7
43	10/24	776	26	4
44	10/31	919	42	3
45	11/7	1158	46	5
46	11/14	1547	31	4
47	11/23	1815	41	9
48	11/23	2068	48	5
49	12/05	2313	23	6
50	12/12	2715	39	11
51	12/19	2031	50	18
52	12/26	1431	28	13
53	1/2	1713	29	9
1	1/9	1644	24	2
2	1/16	1607	18	4
3	1/23	1466	14	1

All figures show reported cases of COVID-19 in Butler County as of 1700 EDT 1/23/2020. Due to delays in reporting, the numbers of confirmed and probable cases on all figures are subject to change between reports and confirmed and probable case counts are likely to increase. *This should not be assumed to be the total disease burden of COVID-19 in Butler County only those that have been laboratory confirmed OR meet ODH probable case criteria AND reported to Public Health.

*Data is provisional – only confirmed or probable COVID-19 cases are included in counts. Report reflects time period since the introduction of SARS-CoV-2 into humans, measured in days. Data accessed from the Ohio Disease Reporting System (ODRS) on 1/23/2021 at 1700 EST.

Figure 3: Reported COVID-19 Cases in Butler County by Event Date 02/28-1/23/21*

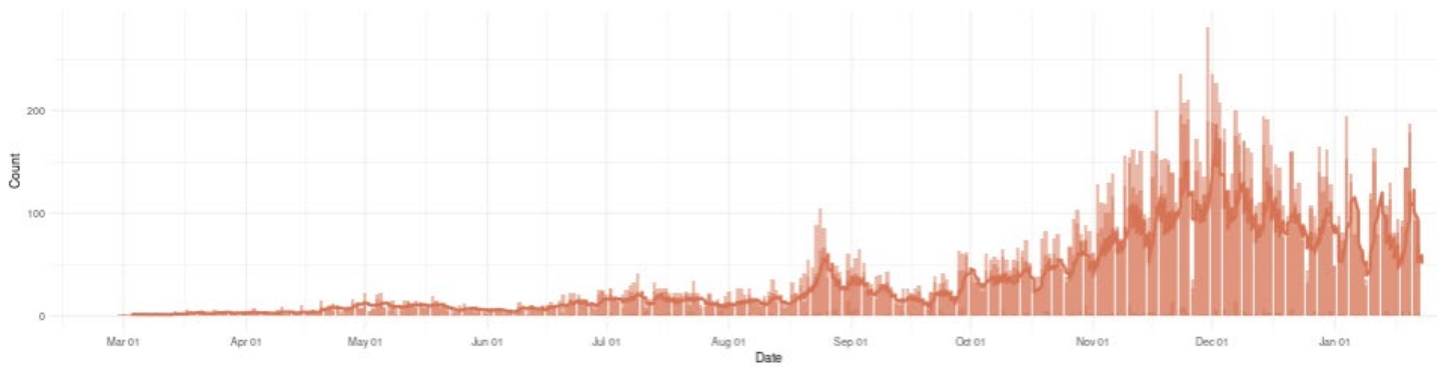
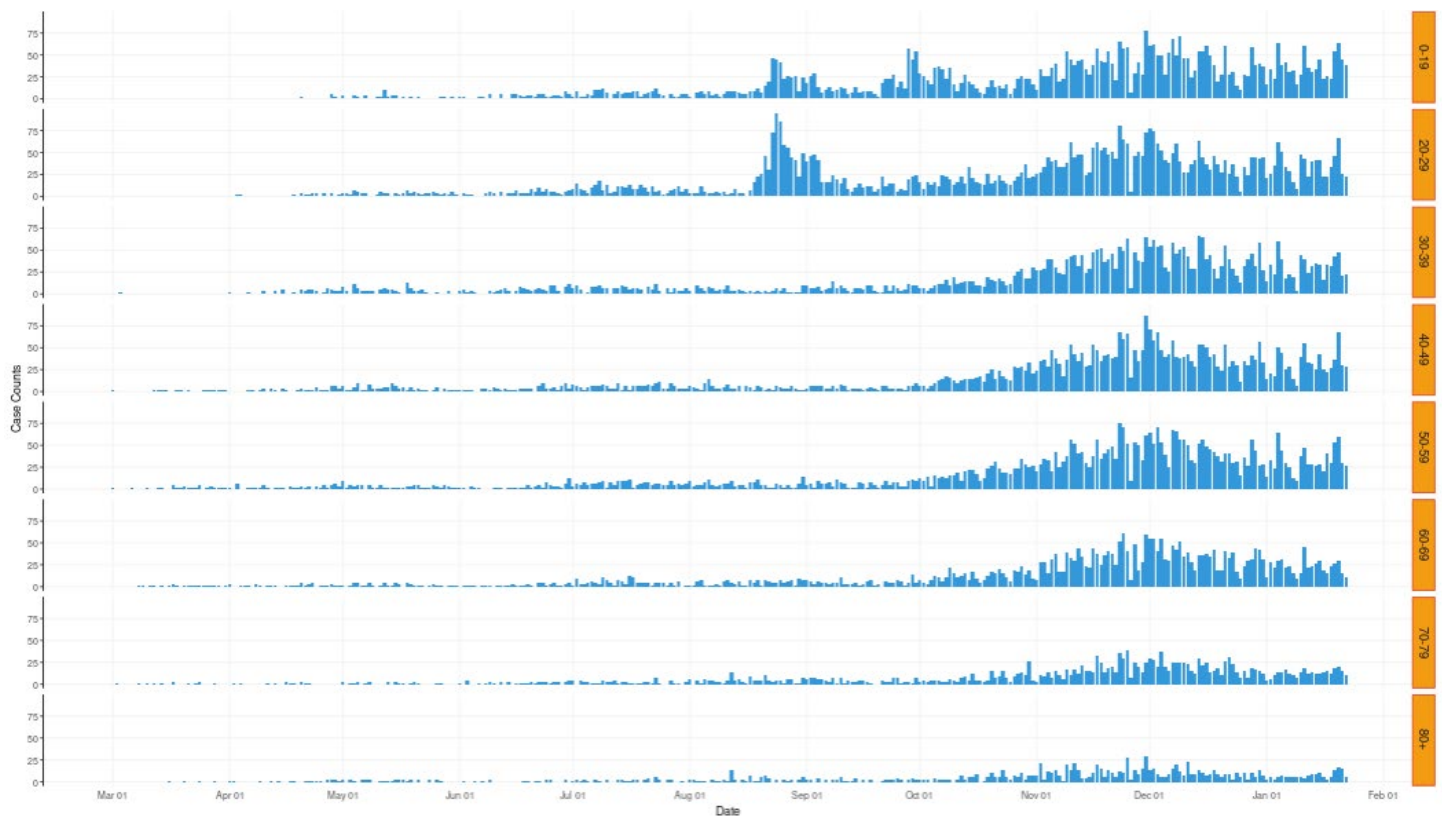


Figure 4: Reported COVID-19 Cases in Butler County by Age Group 02/28-1/23/21*



Graphs sourced from <http://dataviz.miamioh.edu/COVID-OHIO/>

Data sourced from <https://coronavirus.ohio.gov/wps/portal/gov/covid-19/dashboards/overview/>

Number of Vaccinations administered by Butler County General Health District through 1/23/2021: **2,135**

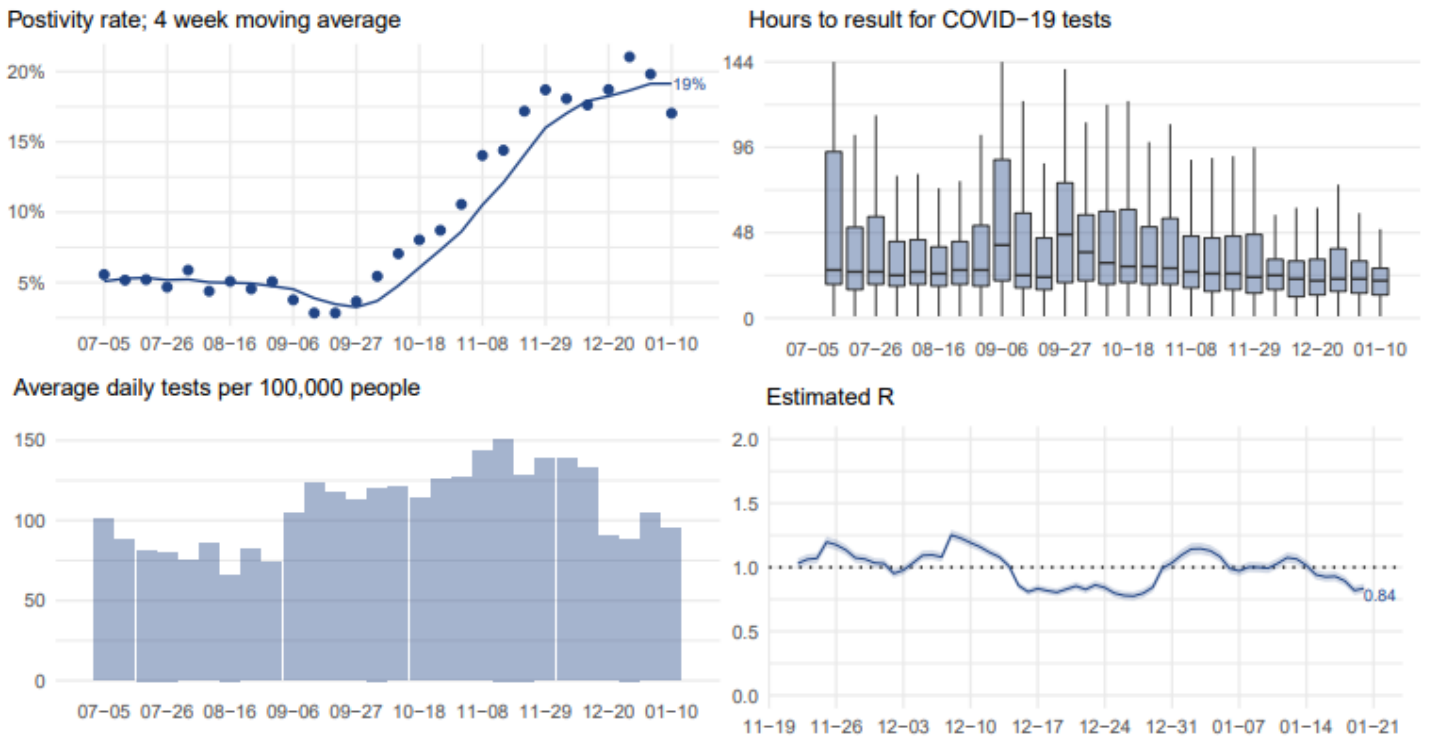
Number of Vaccinations administered by all Partners in Butler County through 1/23/2021: **18,729**

Note: All vaccines are administered within 7 days of receipt, as required.

All figures show reported cases of COVID-19 in Butler County as of 1700 EDT 1/23/2021. Due to delays in reporting, the numbers of confirmed and probable cases on all figures are subject to change between reports and confirmed and probable case counts are likely to increase. *This should not be assumed to be the total disease burden of COVID-19 in Butler County only those that have been laboratory confirmed OR meet ODH probable case criteria AND reported to Public Health.

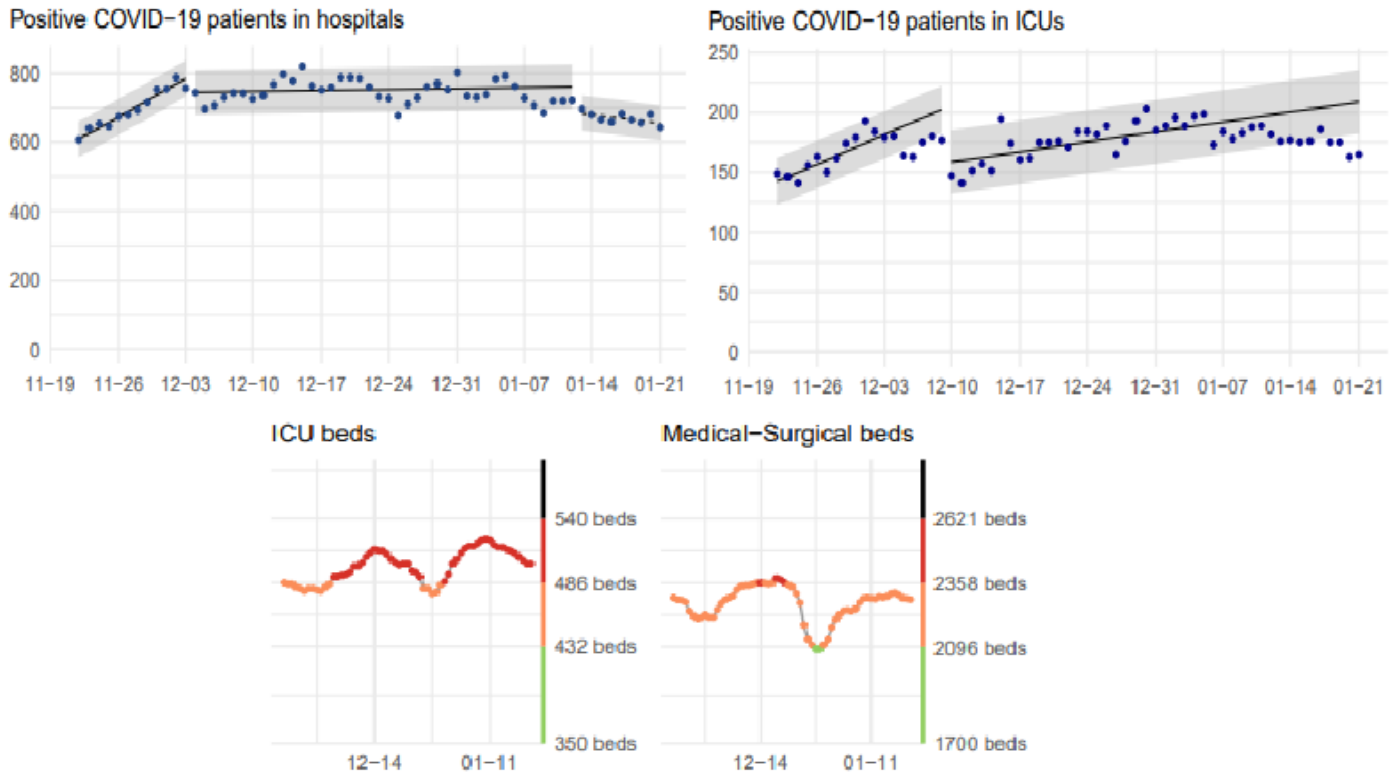
*Data is provisional – only confirmed or probable COVID-19 cases are included in counts. Report reflects time period since the introduction of SARS-CoV-2 into humans, measured in days. Data accessed from the Ohio Disease Reporting System (ODRS) on 1/23/2021 at 1700 EST.

Figure 5: Butler County Testing Statistics



Source: The Health Collaborative and CCHMC

Figure 6: Hospital Capacity Statistics Southwestern Ohio Public Health Region



All figures show reported cases of COVID-19 in Butler County as of 1700 EDT 1/23/2020. Due to delays in reporting, the numbers of confirmed and probable cases on all figures are subject to change between reports and confirmed and probable case counts are likely to increase. *This should not be assumed to be the total disease burden of COVID-19 in Butler County only those that have been laboratory confirmed OR meet ODH probable case criteria AND reported to Public Health.

*Data is provisional – only confirmed or probable COVID-19 cases are included in counts. Report reflects time period since the introduction of SARS-CoV-2 into humans, measured in days. Data accessed from the Ohio Disease Reporting System (ODRS) on 1/23/2021 at 1700 EST.